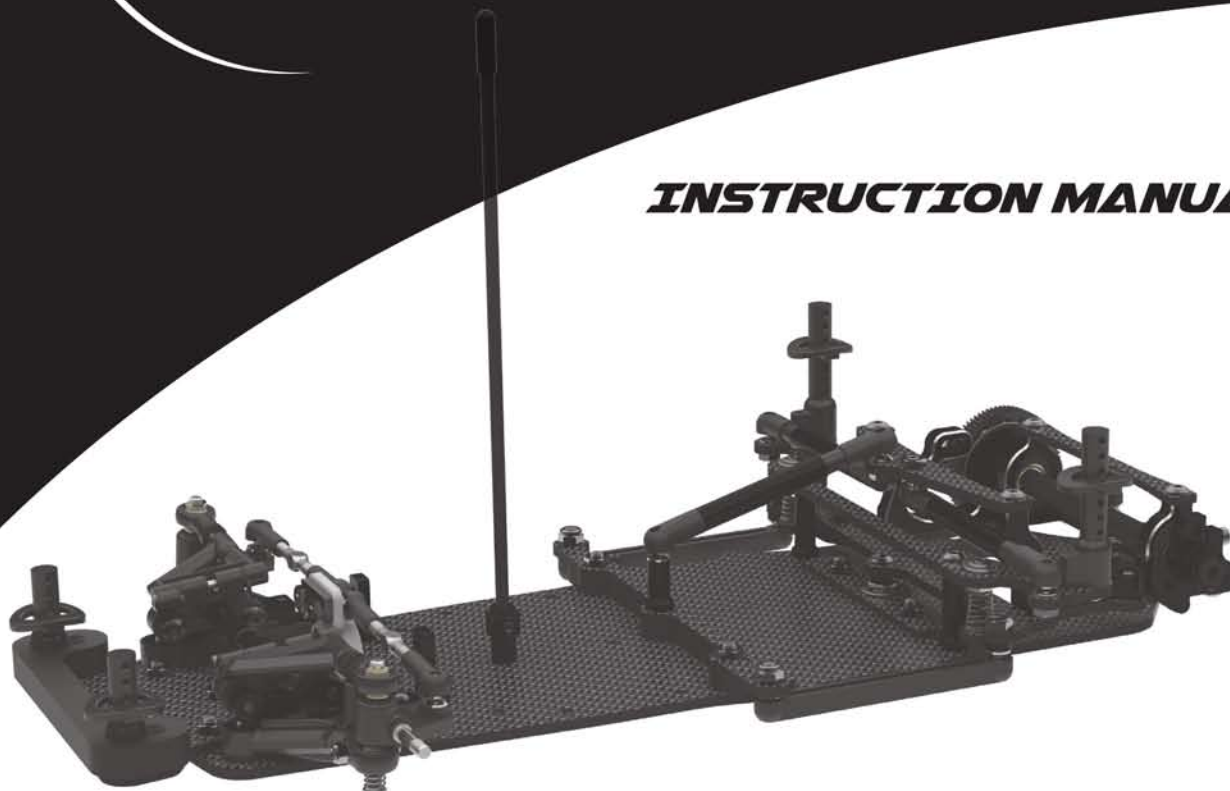


 performance and technology

ECLIPSE

A NEW BEGINNING

INSTRUCTION MANUAL



Schumacher
racing-cars.com

SCHUMACHER RACING
71-73 TENTER ROAD
MOULTON PARK
NORTHAMPTON
NN3 6AX
U.K.
www.racing-cars.com

S1410 ISS1


1/12TH LMP CHASSIS

Additional Items Required

Transmitter and receiver

CR151 - CODE FHSS LCD 2.4G 2 Stick 3Ch Tx+Rx
 CR153 - CODE Sport 2.4G 2 Stick 3Ch Tx+Rx
 CR277 - CODE Steerwheel 2.4G 3Ch Tx+Rx



(Batteries not included)

1/12th Servo



CR194 - CORE RC -1/12th/GT12 Servo
 KO30114 - Servo - RSx 12 - 7.5Kg
 SA107A53811A - SRG-HR Mini Digital Servo

Speed Controller



G796 Male Connector Plugs (pk 2)
 SPW1403 High Current 14AWG Wire

Li-Po Battery

CR279 - 1S Lipo 8000mAh 100C Pro Series - 3.7V



Motor



Pinion Gear



Battery Charger



CR161 UAC50 Charger 12v/110-240v 6A
 CR492 LAC20 - 1S-4S 20W AC Charger

Bodyshell and Paint



Wheels and tyres



CR044 Curved Body Scissors



U2818 Schumacher Body Reamer



CR528 Snipe Nose Serrated Pliers 125mm



U2789 Hex Driver - 1.5mm
 U2790 Hex Driver - 2.0mm
 U2791 Hex Driver - 2.5mm
 U2792 Hex Driver - 3.0mm



U2795 M3 Nut Driver



Soldering Iron
 CR266 40w
 CR275 80w



U3107 - Solder



ED140140 - Phillips Screwdriver 4.0 x 120mm



AM150140 - Nut Driver 4.0 x 60mm



ECLIPSE
 A NEW BEGINNING

Schumacher Racing stocks and distributes the following manufacturers products and full product listings are available on our website at

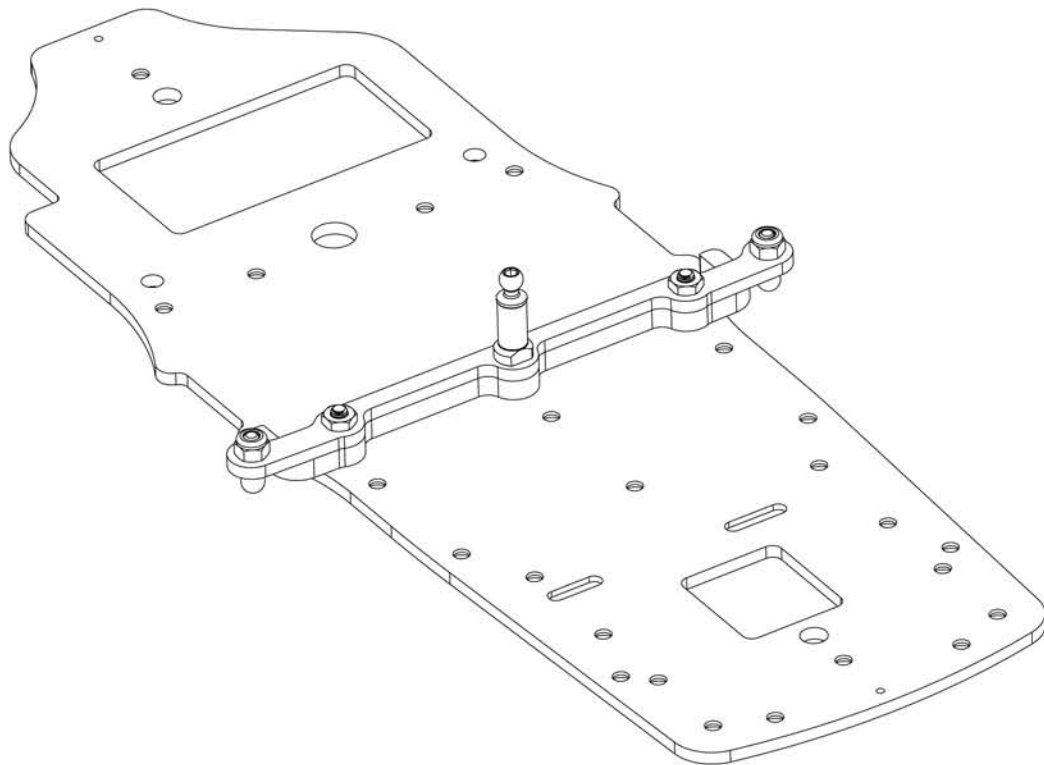
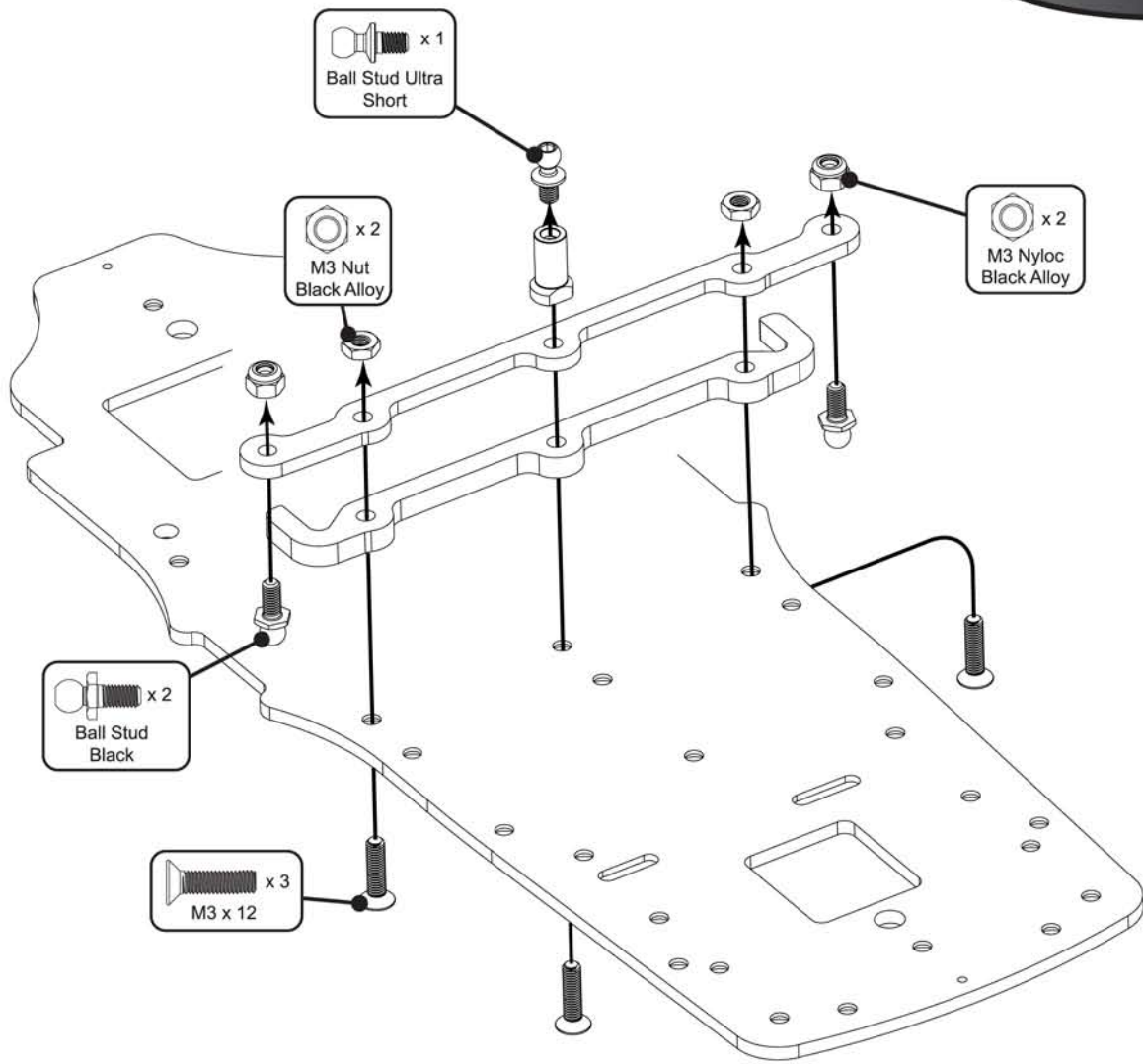
www.racing-cars.com

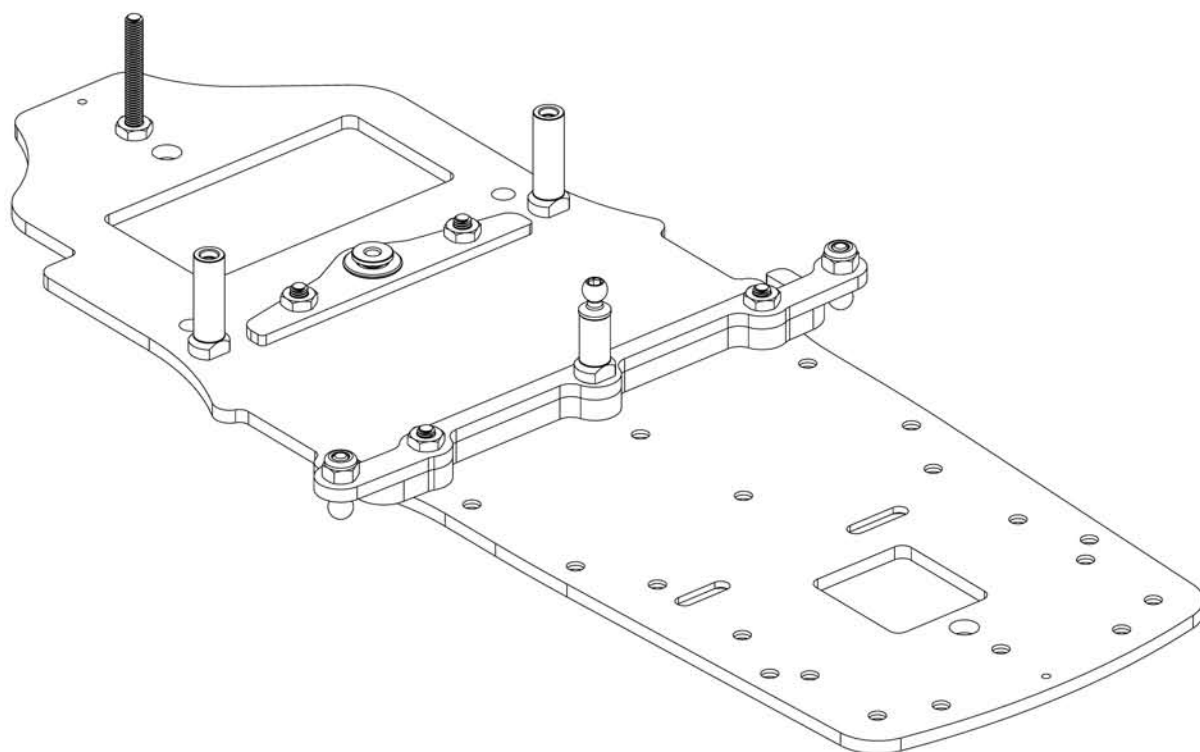
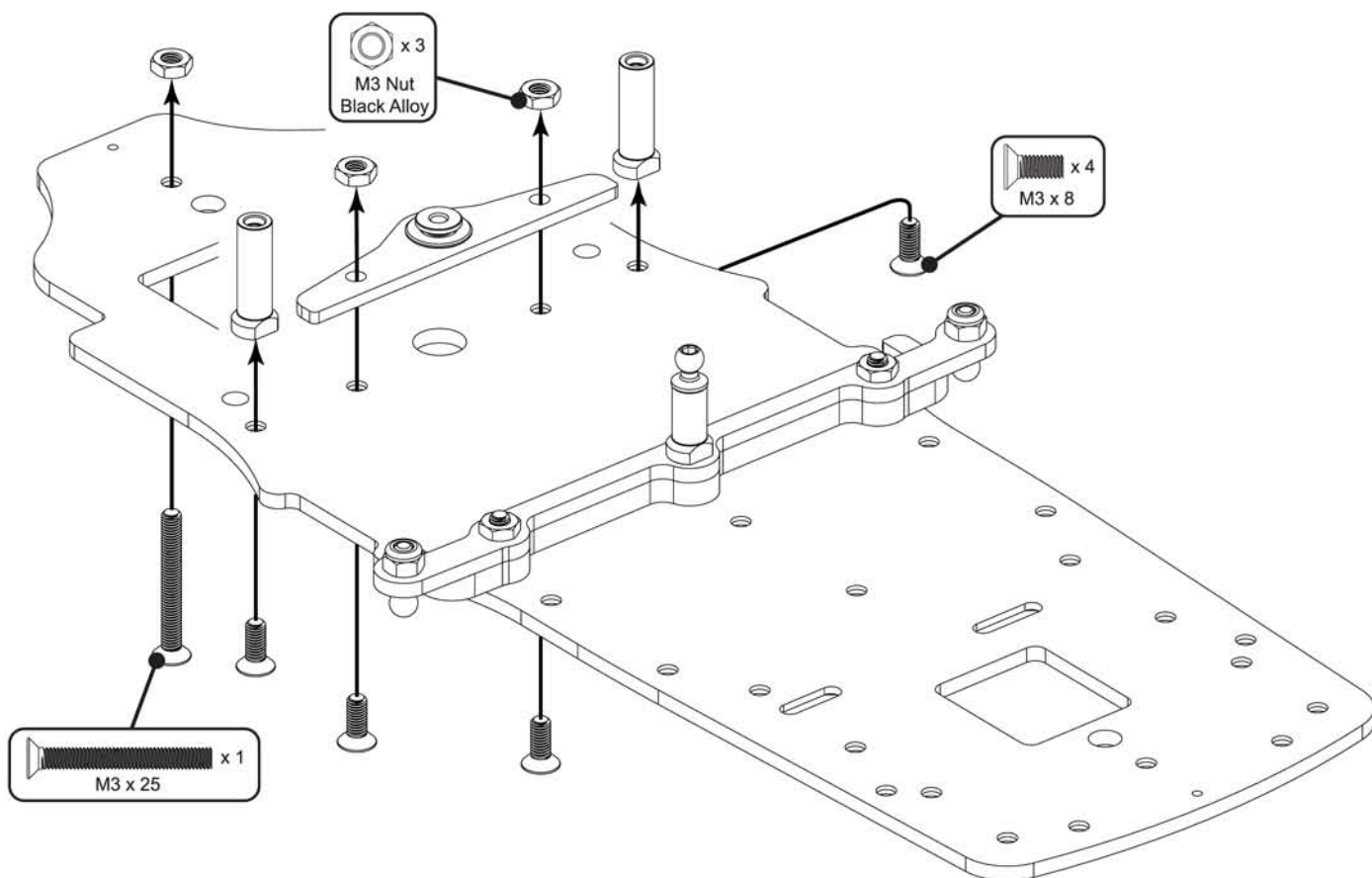
PLEASE NOTE THAT SOME OF THE PRODUCT RANGES BELOW ARE ONLY AVAILABLE IN THE UNITED KINGDOM.

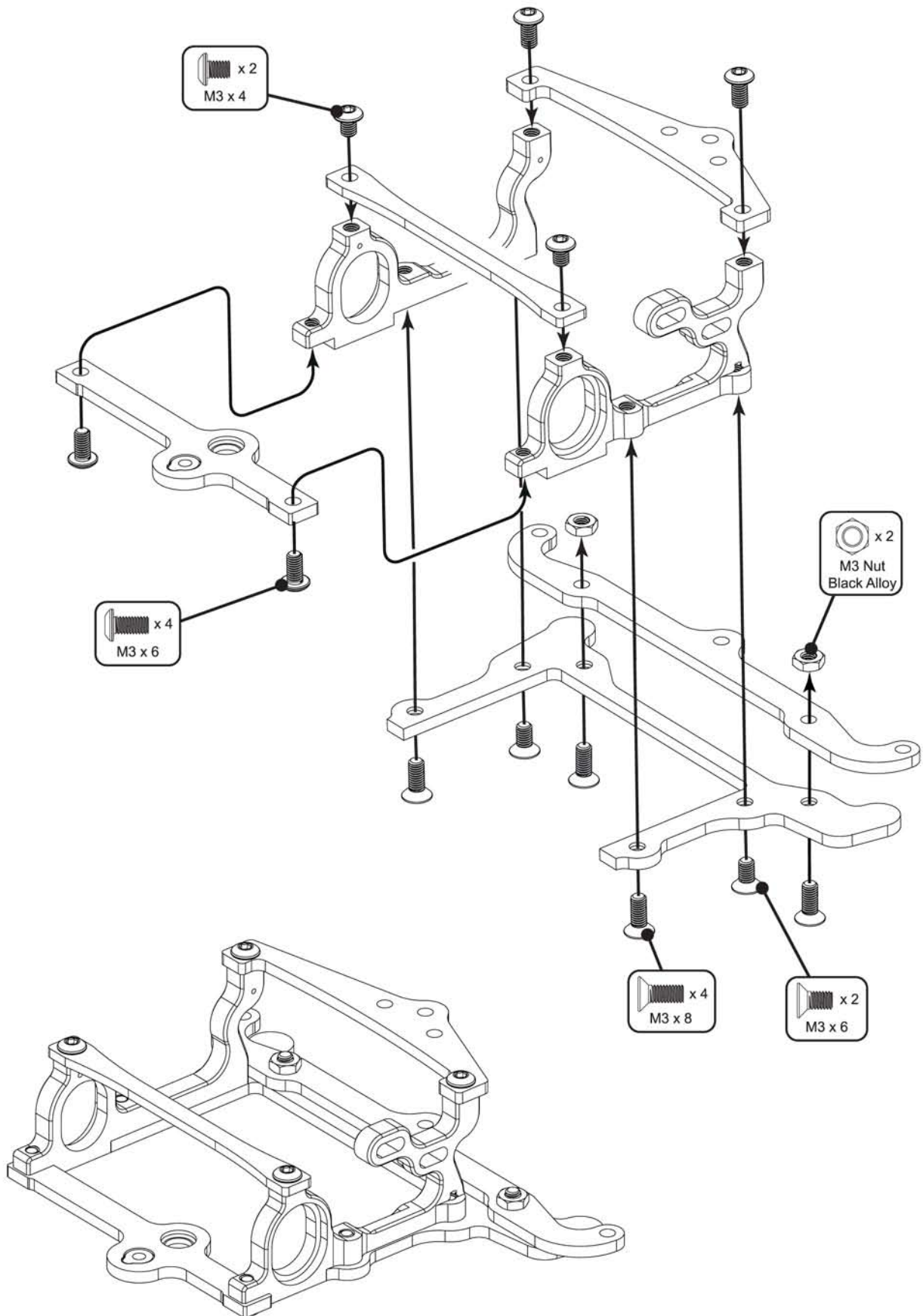


IMPORTANT SAFETY NOTES

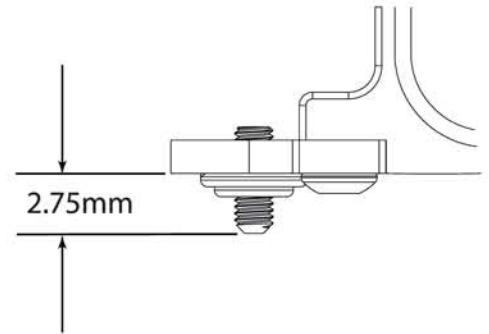
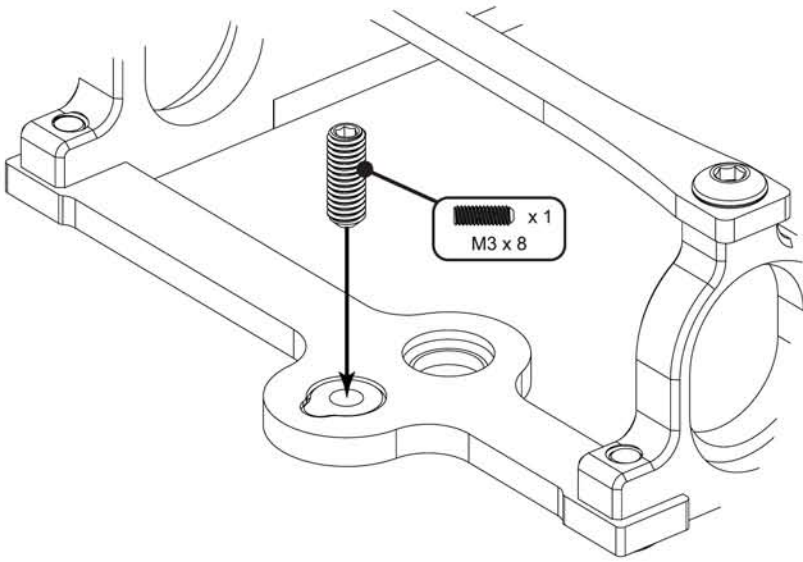
- This product is not suitable for children under the age of 14, without the direct supervision of a responsible adult.
- Select an area for assembly that is away from the reach of small children.
- The parts in this kit are small and can be swallowed by children causing choking and possible internal injuries.
- Exercise care when using hand tools and sharp instruments during assembly.
- Carefully read all manufacturers warnings and cautions for any additional items used in the construction.
- In line with our policy of continuous development the exact details of the kit may vary.
- DO NOT use this car on public roads or in places where it can interfere with traffic, people or animals.
- Always check the operation of the radio with the wheels off the ground, before using the car.
- Make sure the radio and car batteries are fully charged before use.
- Disconnect and remove the battery from the car when not in use.
- Always store and charge LiPo batteries in a fireproof container.
- DO NOT put fingers or any objects inside rotating or moving parts as this may cause injury.
- Make sure the charger is correctly set for the type of battery you are using. Incorrect charging may cause a fire.
- Insulate all exposed electrical wiring. Exposed or damaged wires can cause short circuits and fire.
- The motor and speed controller can become hot during use. DO NOT touch them immediately after using your car as this may cause injury.



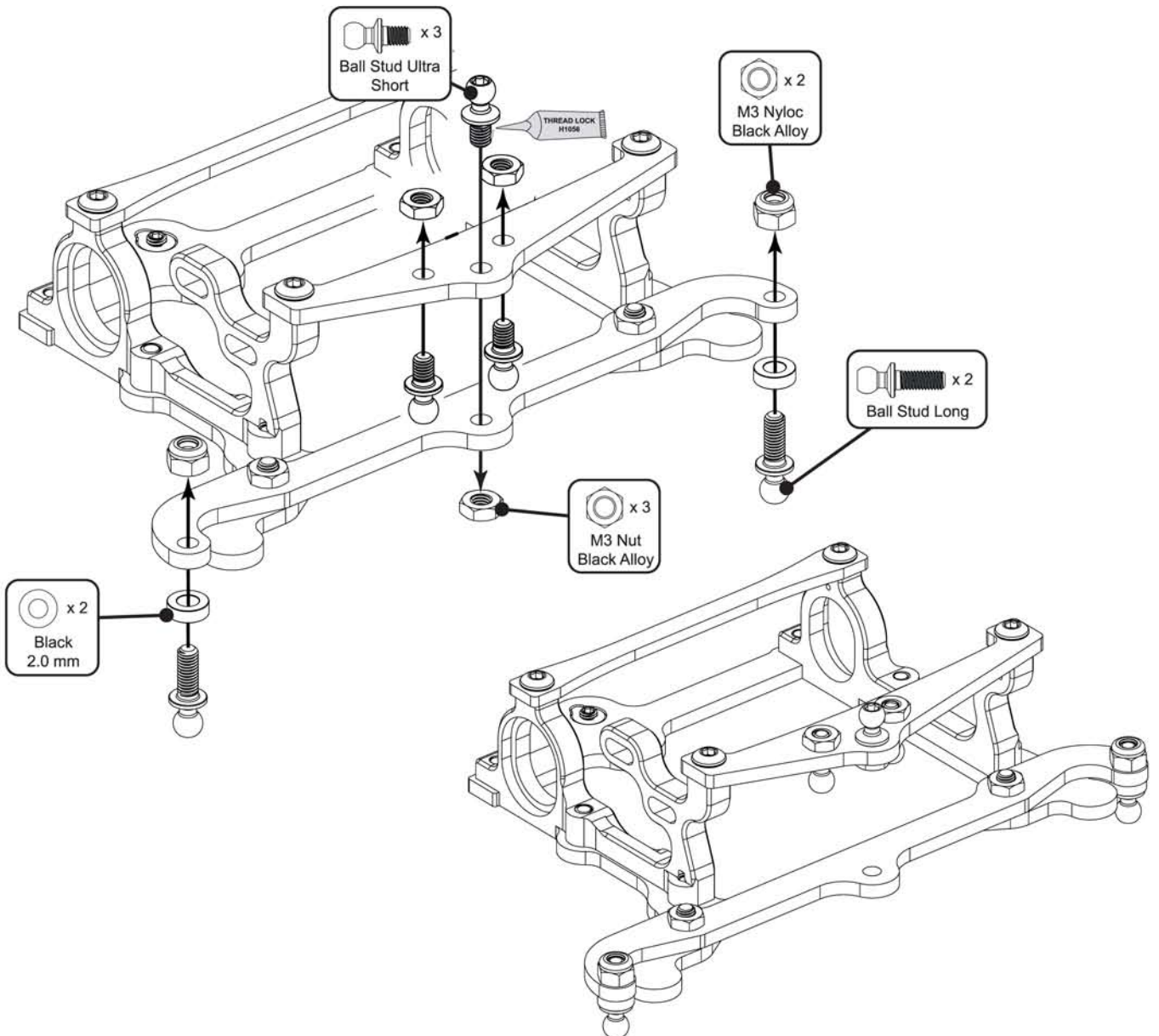




Step 4 A



Step 4 B



REAR SPRING OPTIONS

SOFTER ← → HARDER

U4838
BLACK

U4839
SILVER

U4840
GOLD

U4841
NICKEL
(KIT)

The nut setting of approximately 3.50mm should give a pod parallel to the chassis.

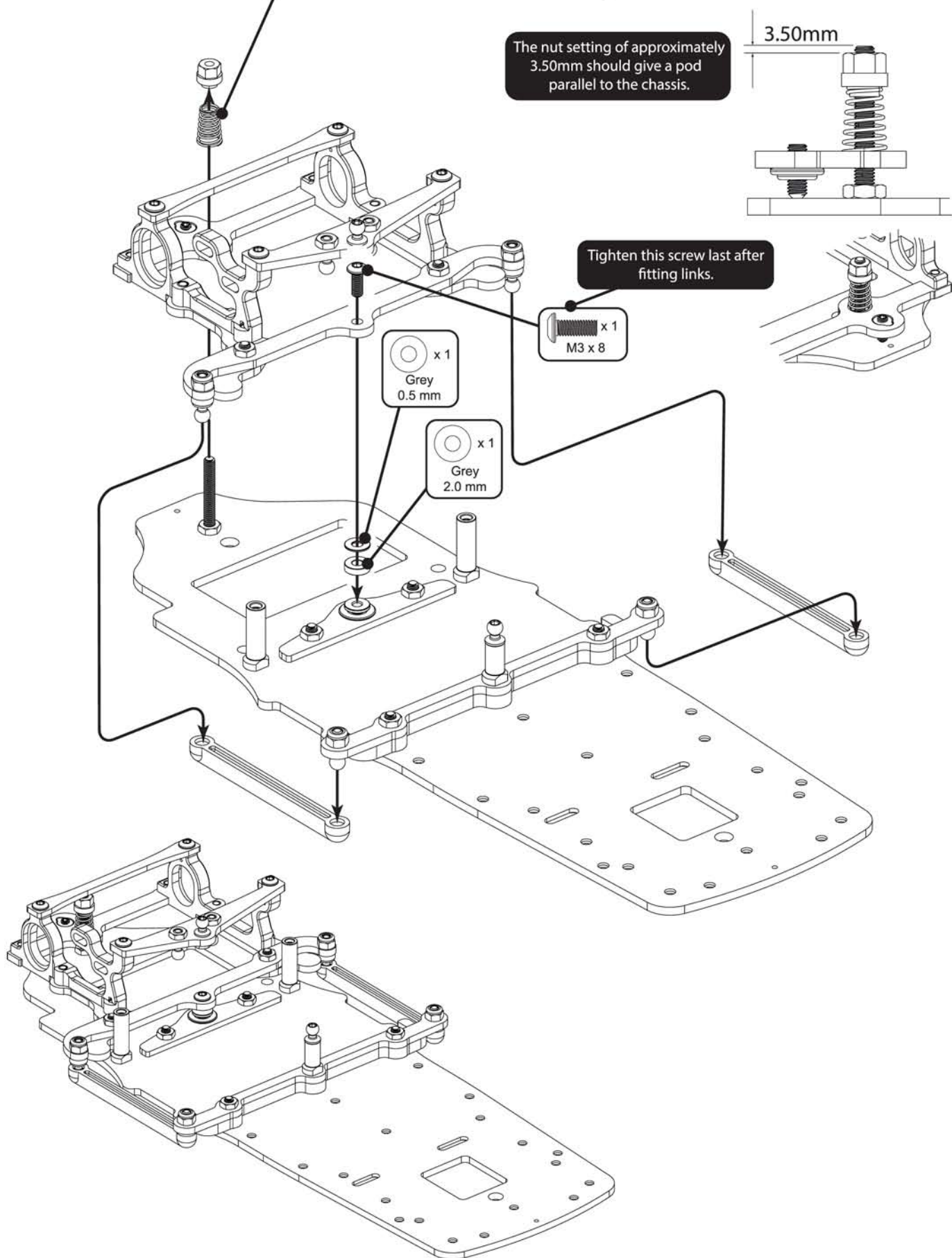
3.50mm

Tighten this screw last after fitting links.

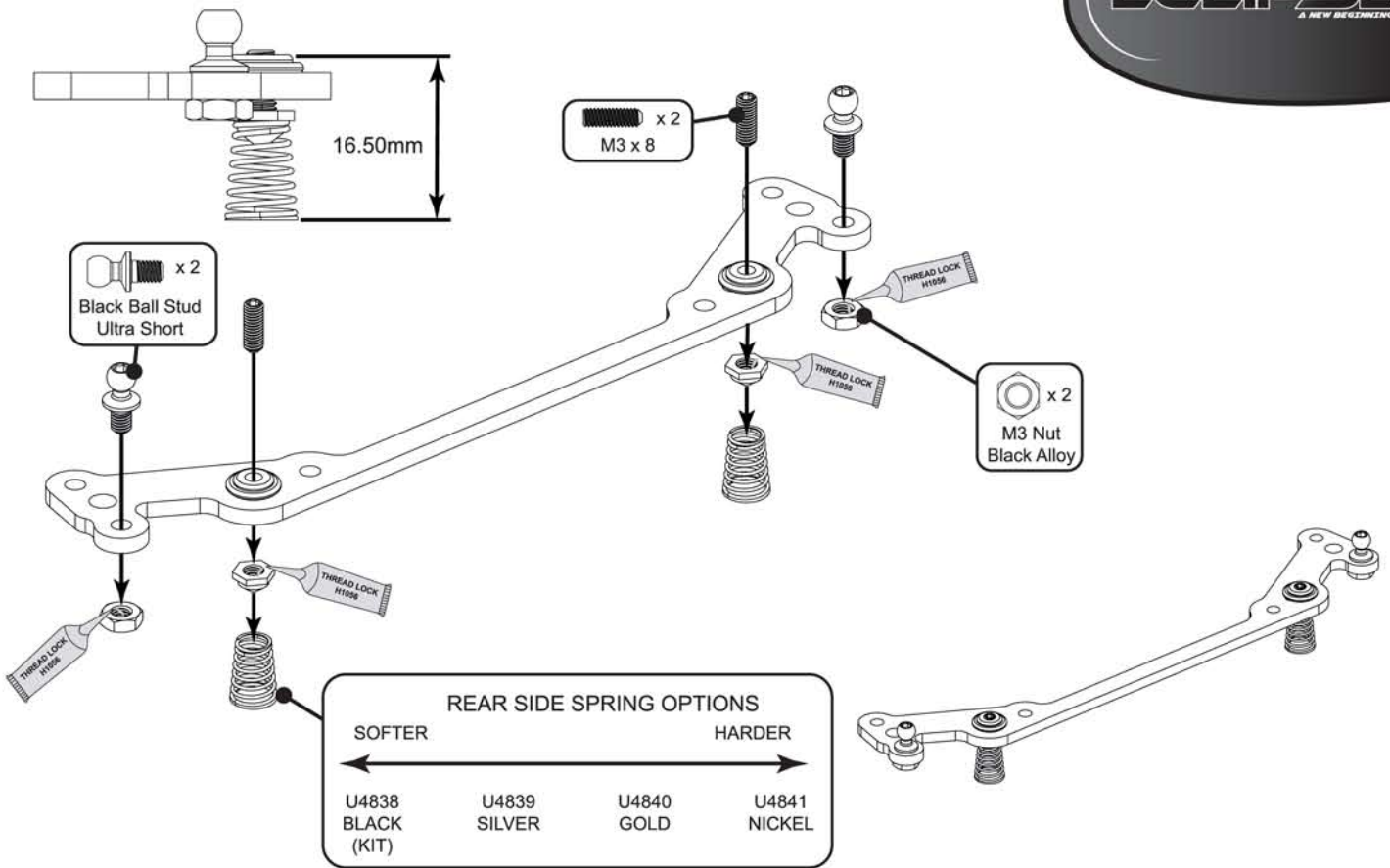
x 1
Grey
0.5 mm

x 1
Grey
2.0 mm

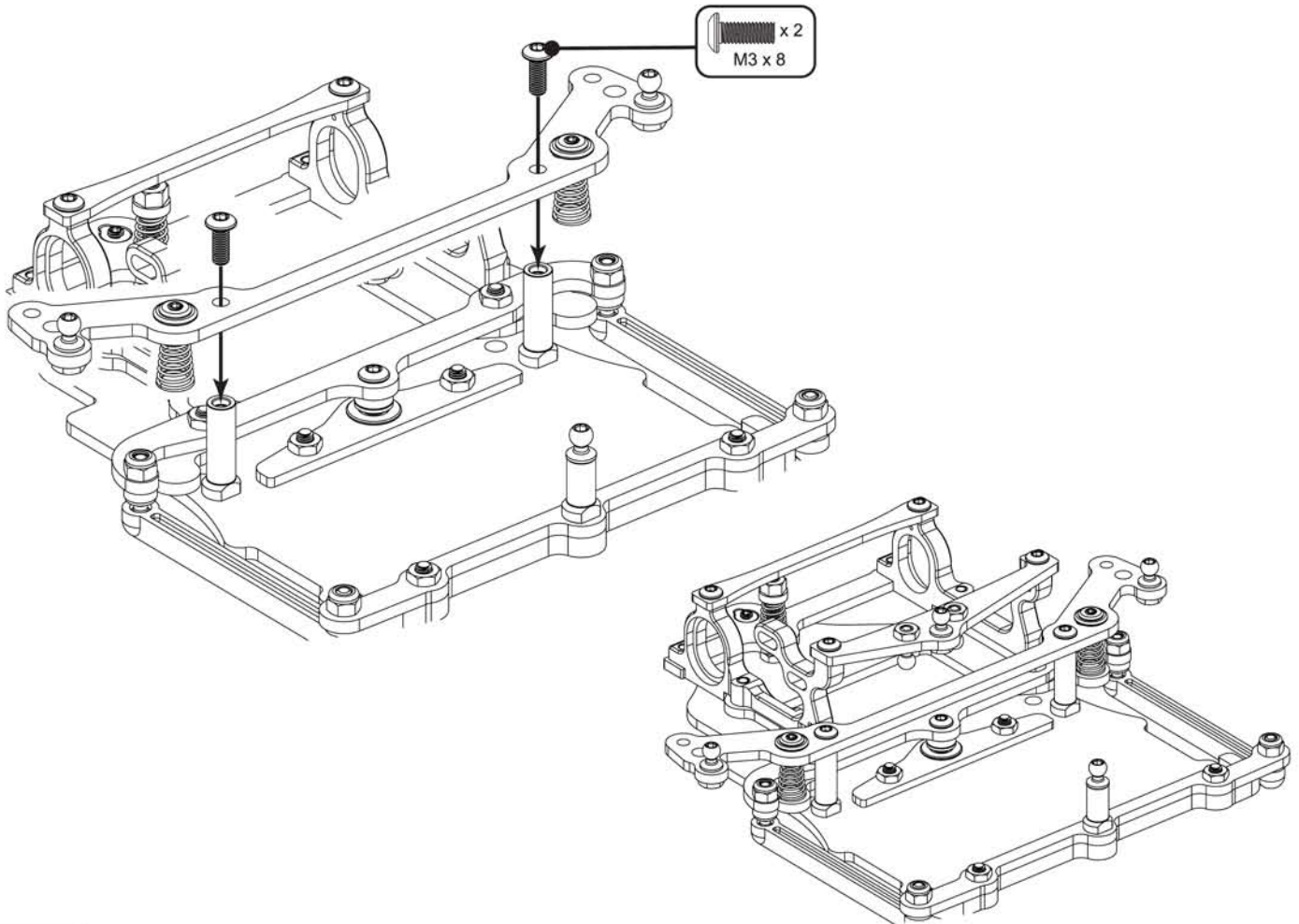
x 1
M3 x 8



Step 6 A



Step 6 B



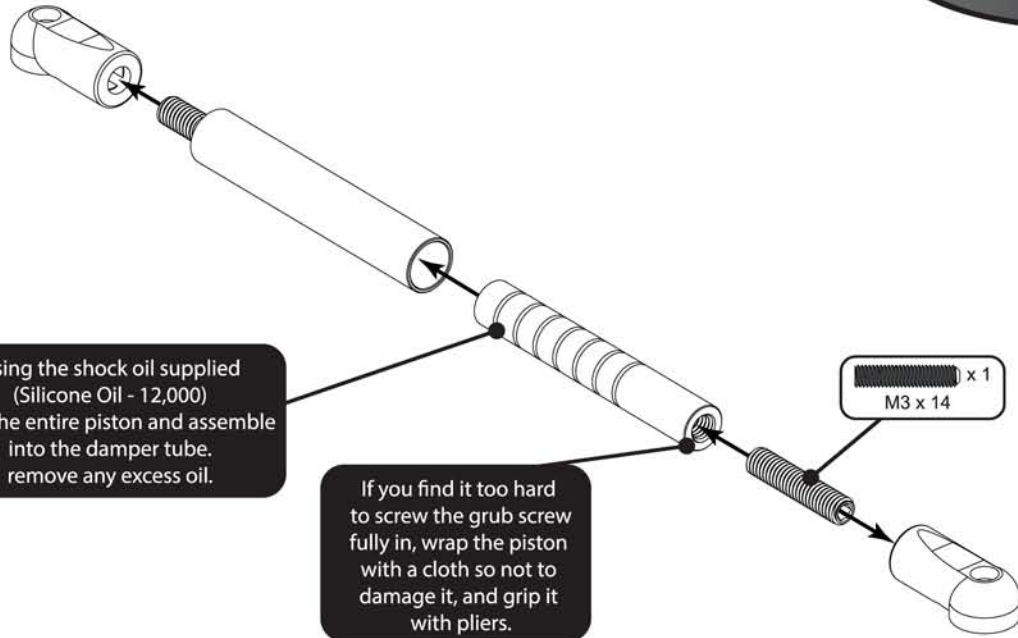
Step 7 A

Assemble all 3 damper tubes in the same way.

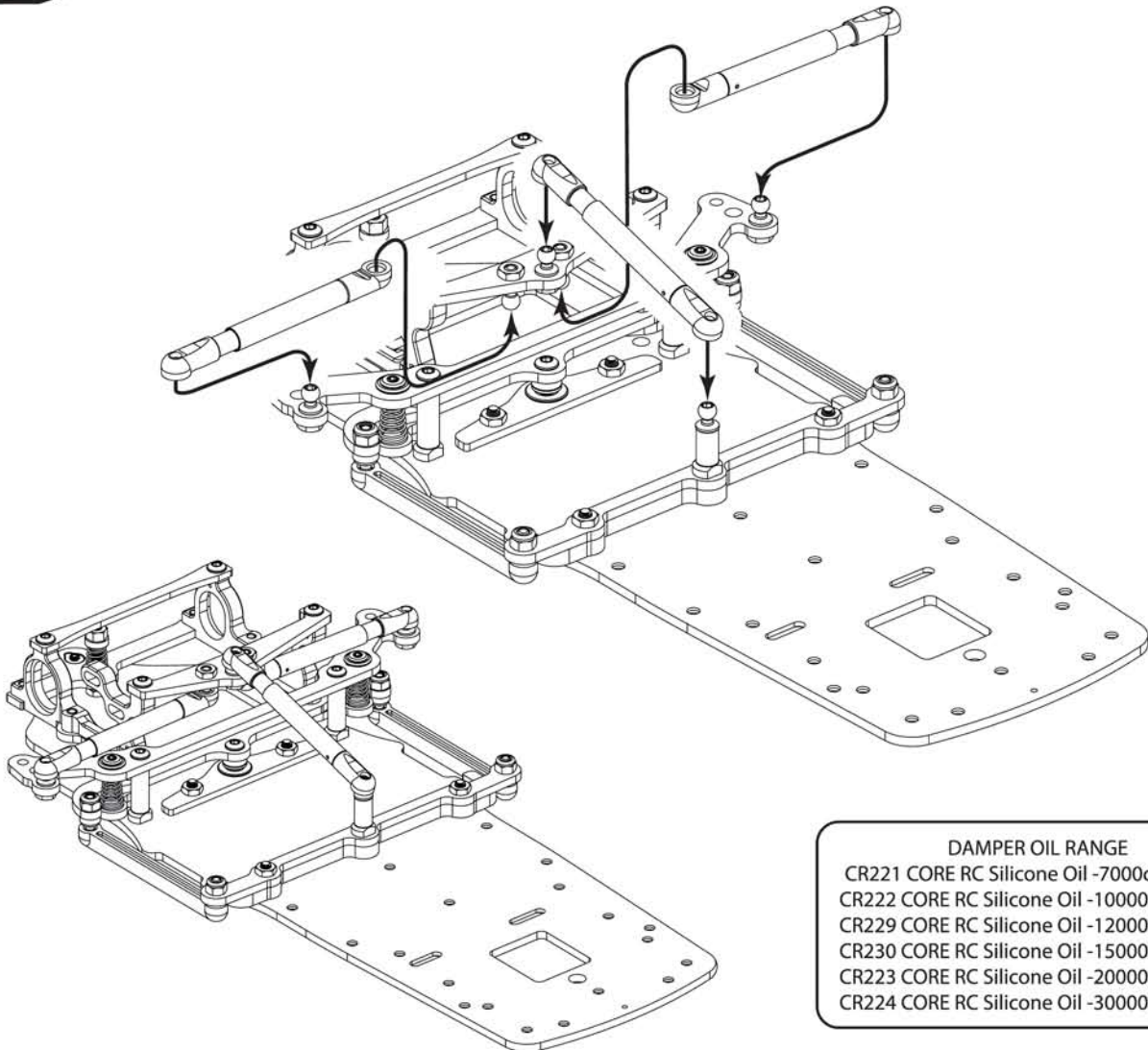
ECLIPSE
A NEW BEGINNING

Using the shock oil supplied
(Silicone Oil - 12,000)
coat the entire piston and assemble
into the damper tube.
remove any excess oil.

If you find it too hard
to screw the grub screw
fully in, wrap the piston
with a cloth so not to
damage it, and grip it
with pliers.



Step 7 B



DAMPER OIL RANGE

CR221 CORE RC Silicone Oil -7000cSt - 60ml
CR222 CORE RC Silicone Oil -10000cSt - 60ml
CR229 CORE RC Silicone Oil -12000cSt - 60ml
CR230 CORE RC Silicone Oil -15000cSt - 60ml
CR223 CORE RC Silicone Oil -20000cSt - 60ml
CR224 CORE RC Silicone Oil -30000cSt - 60ml

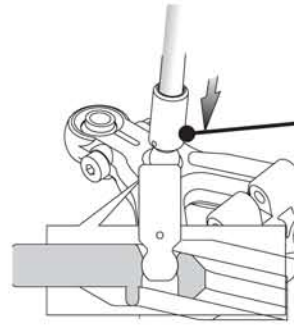
Step 8 A

ECLIPSE
A NEW BEHAVIOUR

Left hand side shown. Repeat for the right hand side.
This applies for the remainder of the front end.

Tighten lightly to remove excess play in the pivot ball.
Overtight will cause the pivot balls to seize.

Mouldings Bag C

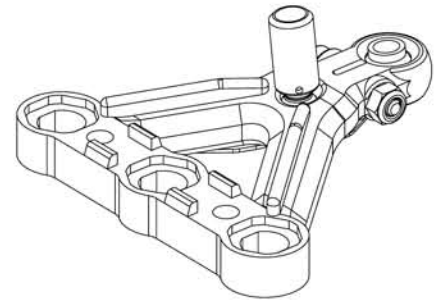


Push a 3.0mm allen driver inside with increasing pressure. The ball will click into place.
If the ball is pushed too far, the ball will become stiff. Push from the opposite side until it clicks into the correct position.
Pro tip: Using a small bench vice makes this job much safer. Place an M3 x 10 screw (included) into the tube and slowly press the socket in.
CR248 - Core RC - Hobby Bench Vice

x 1
M2 x 12

Mouldings Bag A

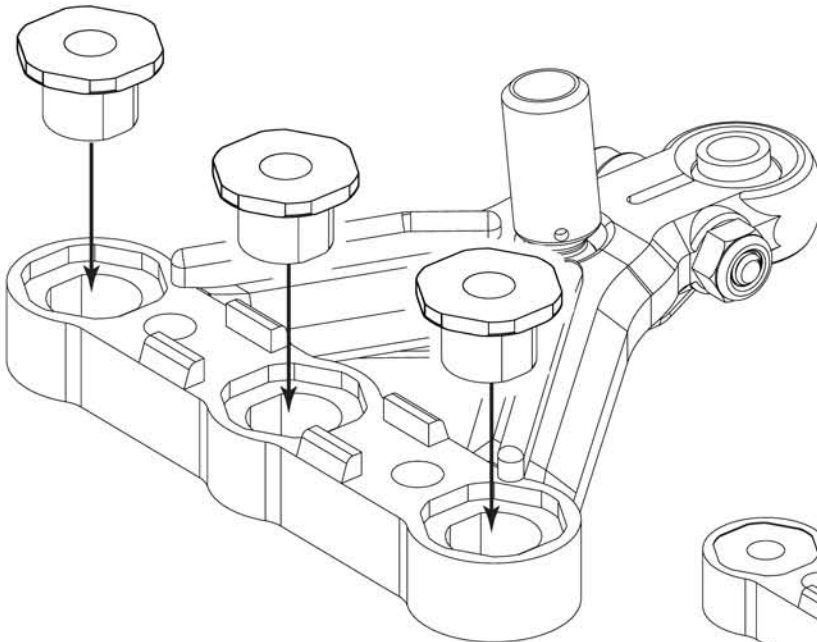
x 1
M2 Nyloc



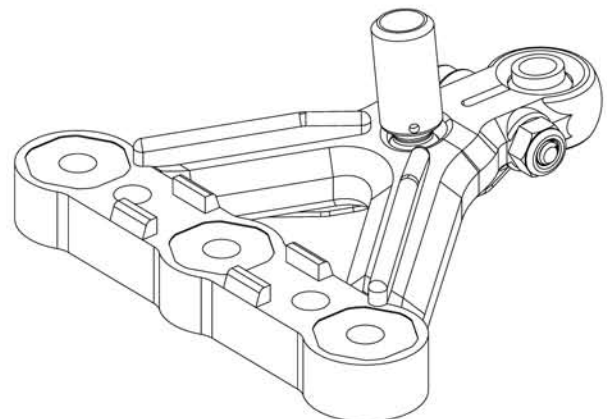
Note direction of ball!
Must be fitted this way.

Push the arm down onto the pivot ball with some force. The ball will click into place. Do not use pliers.

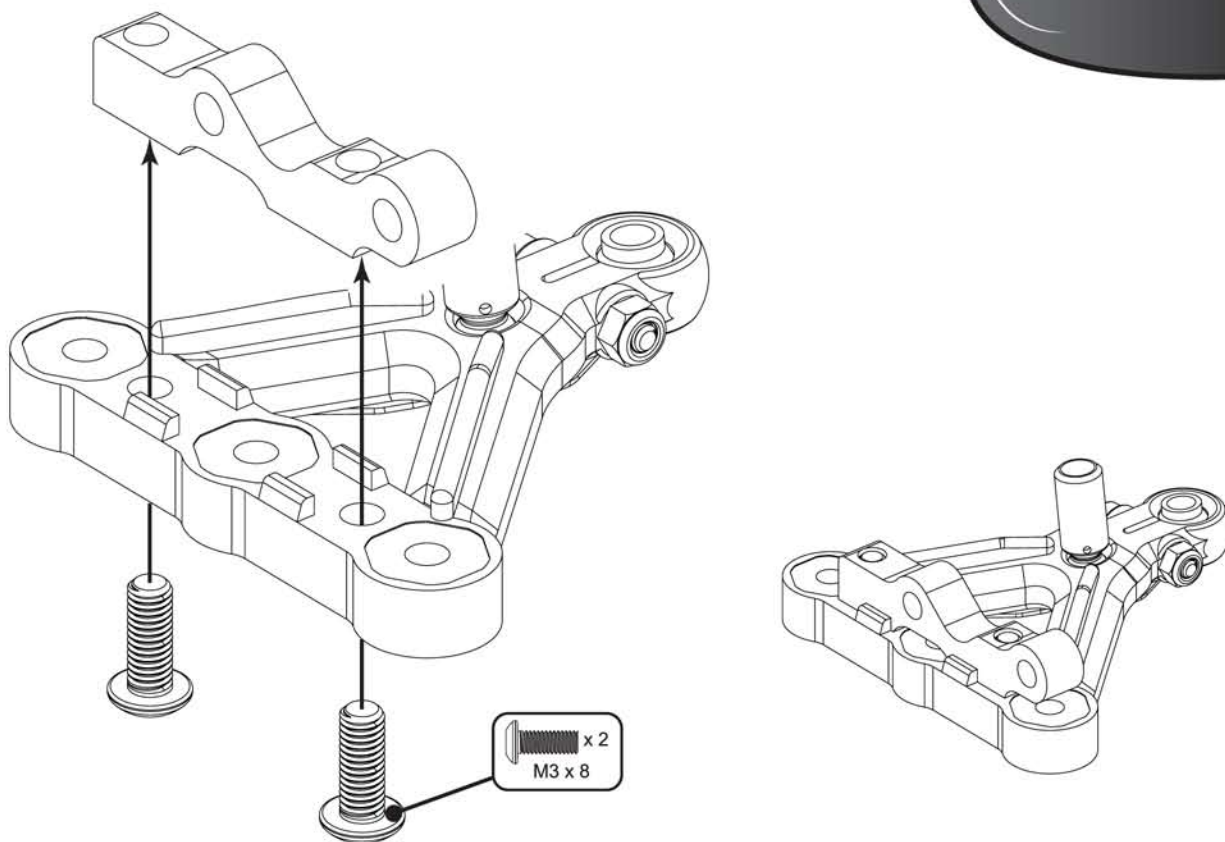
Step 8 B



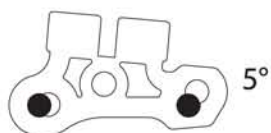
Kit arm insert is 0mm offset,
For trackwidth adjustment
use speed secret part -
U7026 0.5 Offset Lower
Arm Insert - Eclipse - pk3



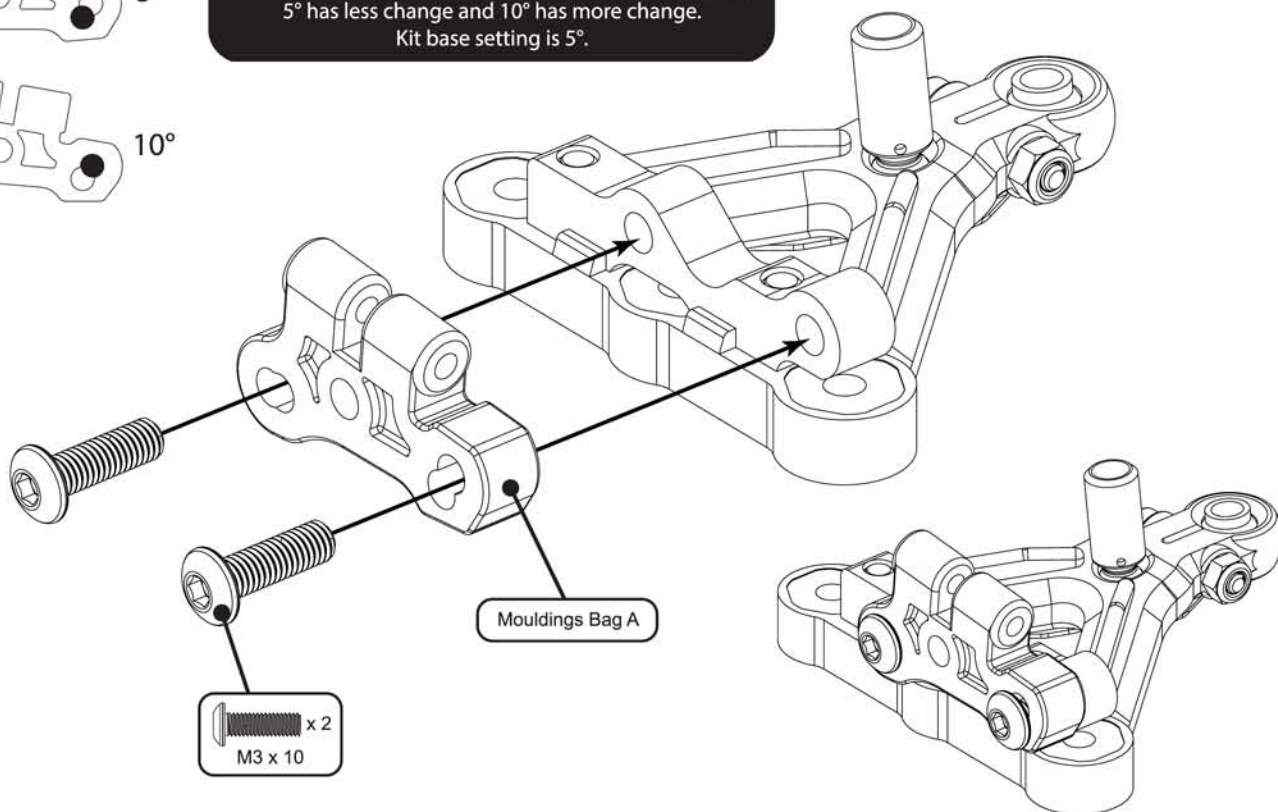
Step 9 A



Step 9 B



REACTIVE CASTER
Adjusting the position of these screws alters how much the caster changes when the suspension is compressed. 5° has less change and 10° has more change. Kit base setting is 5°.



Step 10

Ensure the turnbuckle is inserted very accurately into the plastic to ensure equal caster on the left and right of the car.
Pro Tip: Use the M3 x 10 screw (from step 9) to pre-thread the upper arm correctly. (Only the inner arm, not the outer socket)

Note direction!

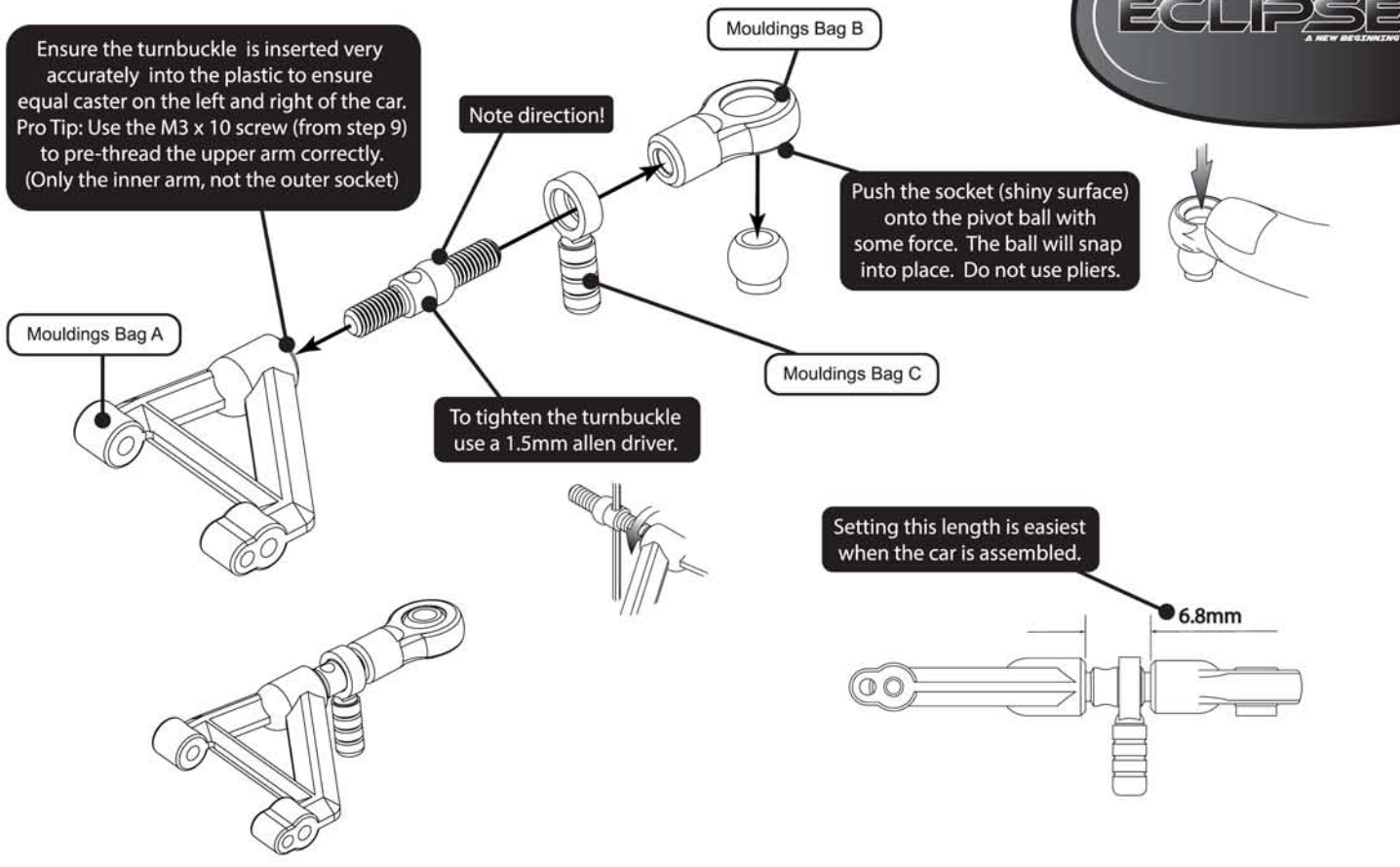
Push the socket (shiny surface) onto the pivot ball with some force. The ball will snap into place. Do not use pliers.



To tighten the turnbuckle use a 1.5mm allen driver.

Setting this length is easiest when the car is assembled.

6.8mm



Step 11

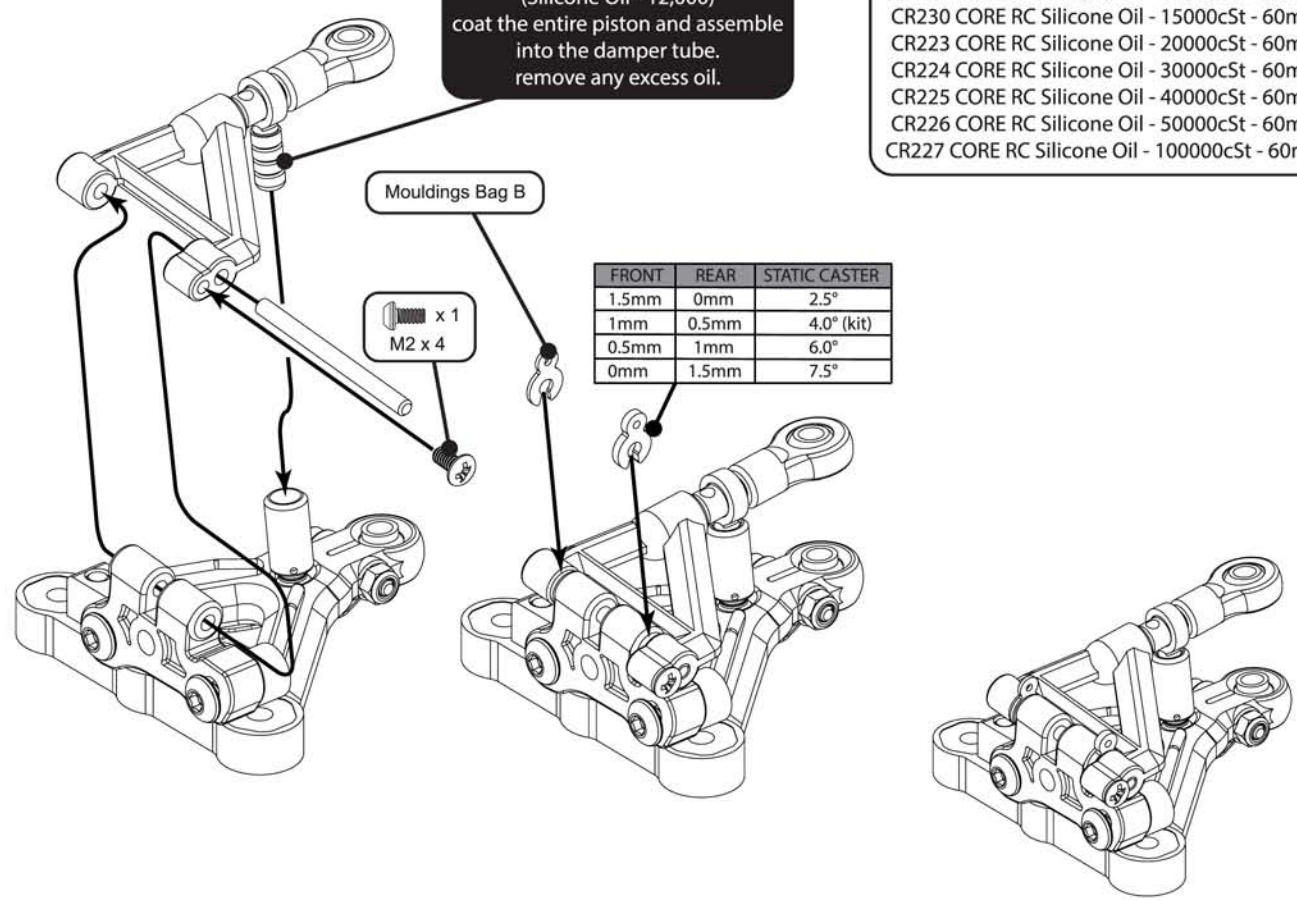
Using the shock oil supplied (Silicone Oil - 12,000) coat the entire piston and assemble into the damper tube, remove any excess oil.

- DAMPER OIL RANGE FRONT**
- CR229 CORE RC Silicone Oil - 12000cSt - 60ml
 - CR230 CORE RC Silicone Oil - 15000cSt - 60ml
 - CR223 CORE RC Silicone Oil - 20000cSt - 60ml
 - CR224 CORE RC Silicone Oil - 30000cSt - 60ml
 - CR225 CORE RC Silicone Oil - 40000cSt - 60ml
 - CR226 CORE RC Silicone Oil - 50000cSt - 60ml
 - CR227 CORE RC Silicone Oil - 100000cSt - 60ml

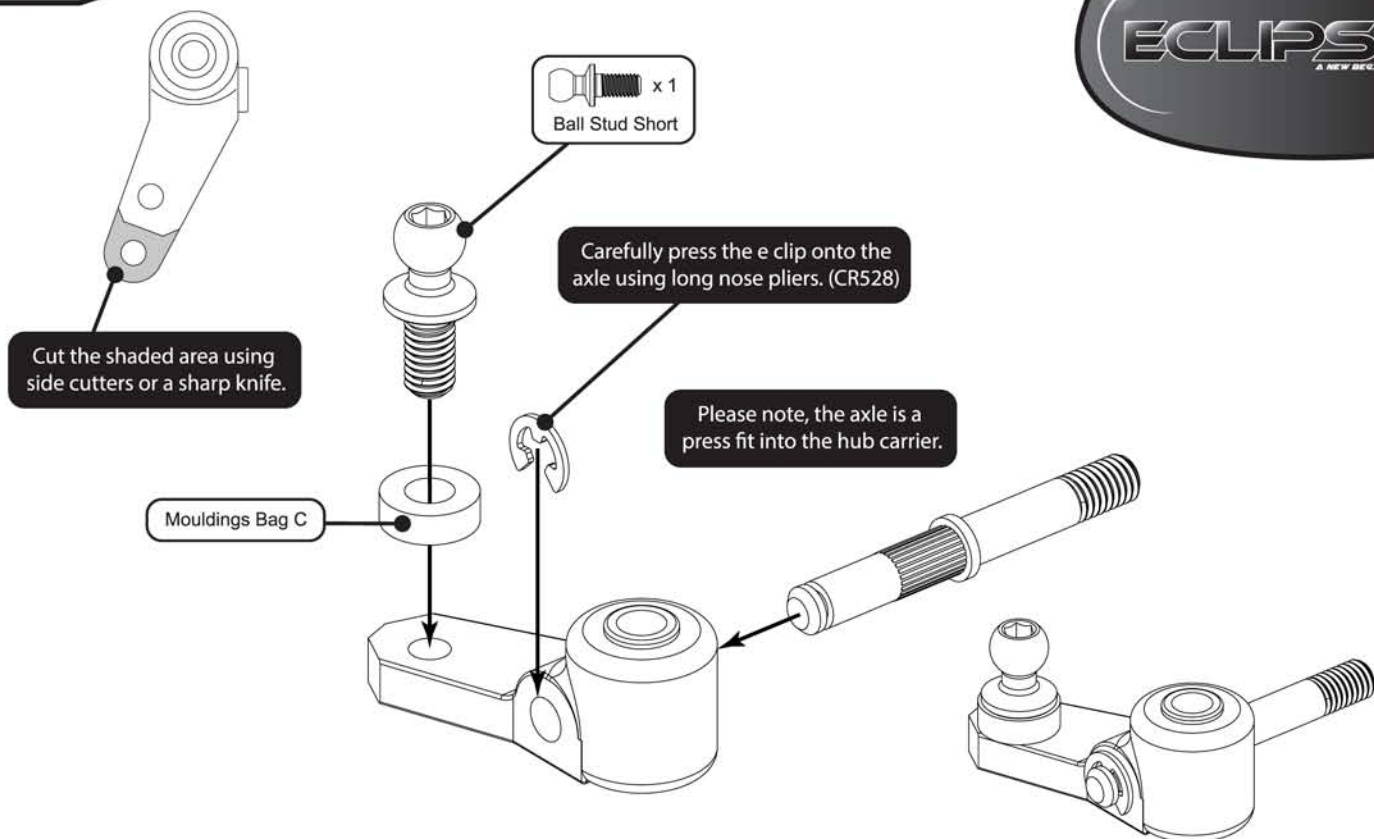
| FRONT | REAR | STATIC CASTER |
|-------|-------|---------------|
| 1.5mm | 0mm | 2.5° |
| 1mm | 0.5mm | 4.0° (kit) |
| 0.5mm | 1mm | 6.0° |
| 0mm | 1.5mm | 7.5° |

Mouldings Bag B

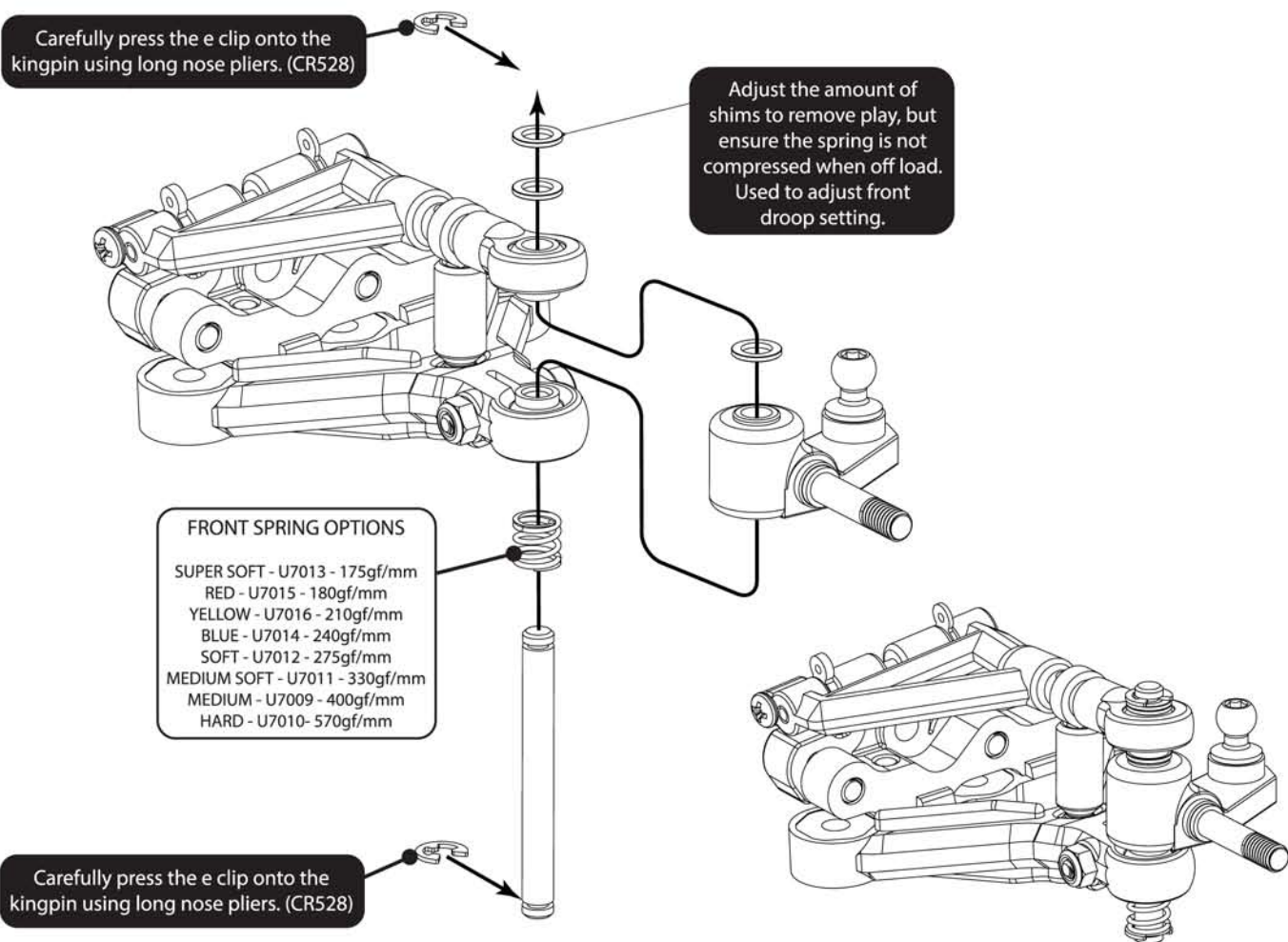
x 1
M2 x 4



Step 12

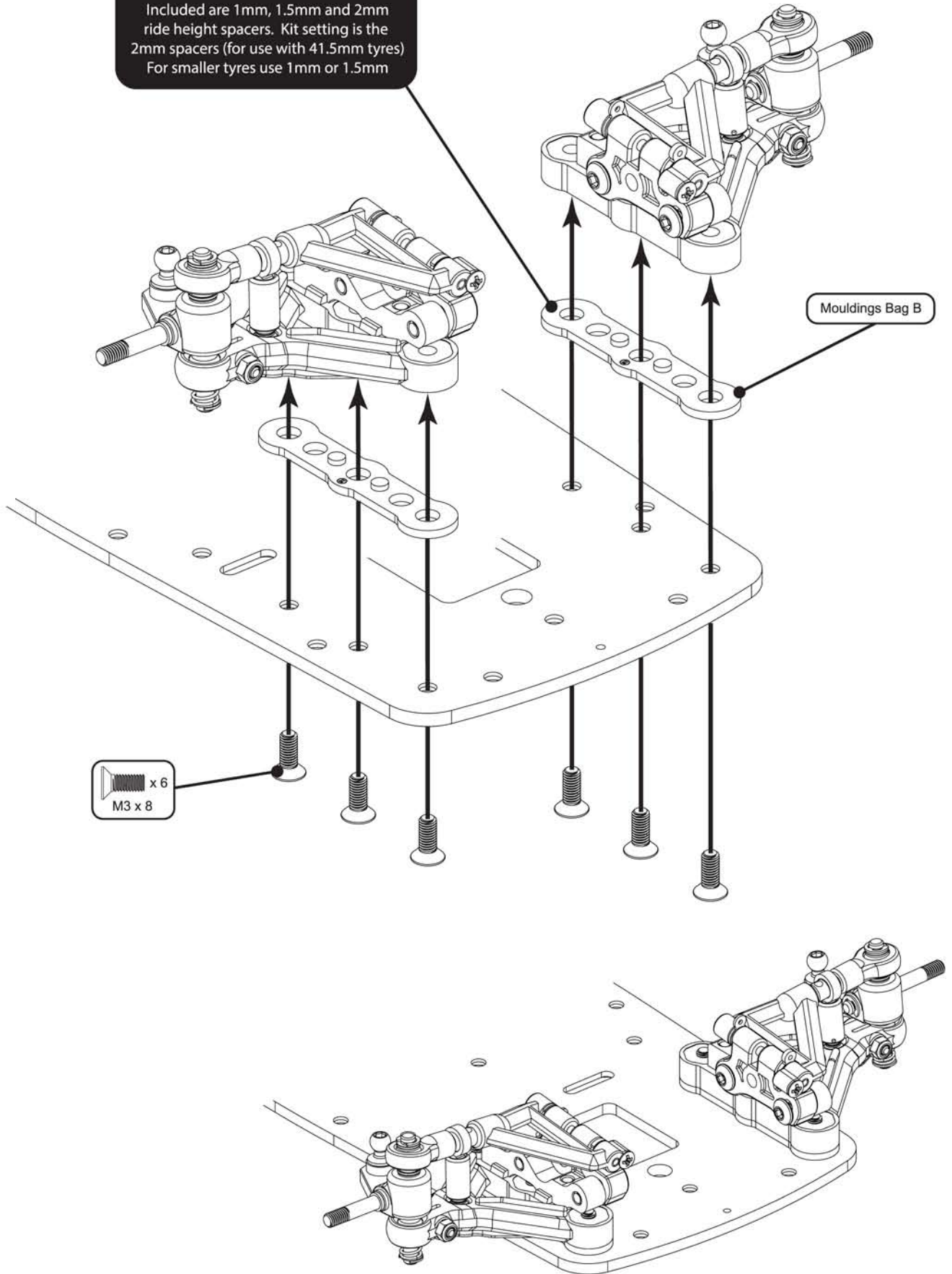


Step 13



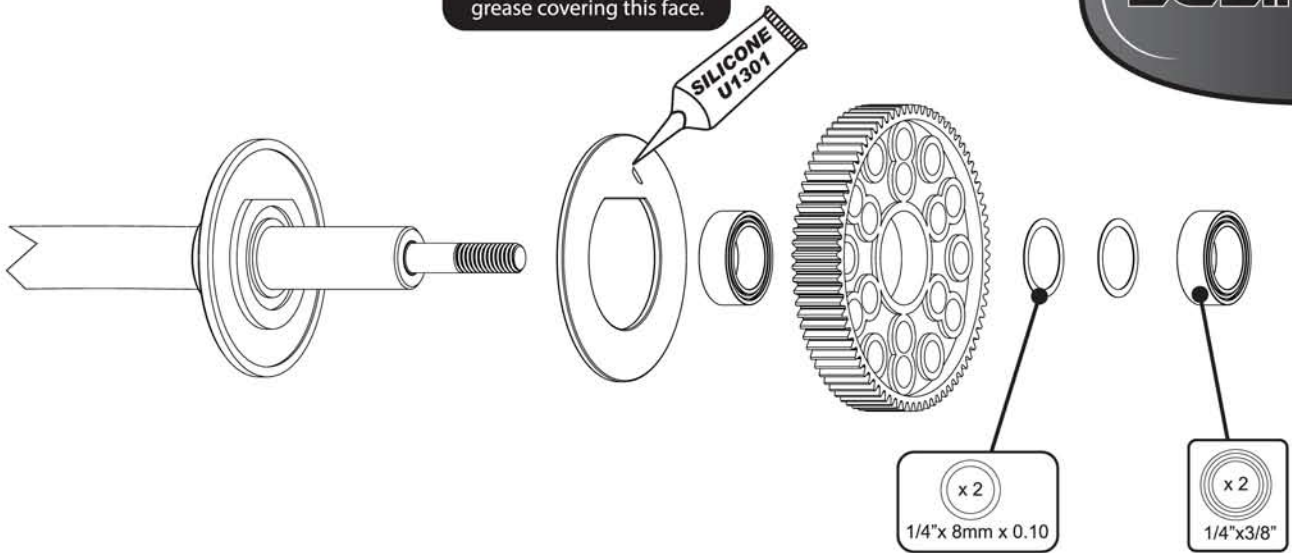
FRONT RIDE HEIGHT ADJUSTMENT

Included are 1mm, 1.5mm and 2mm ride height spacers. Kit setting is the 2mm spacers (for use with 41.5mm tyres)
For smaller tyres use 1mm or 1.5mm



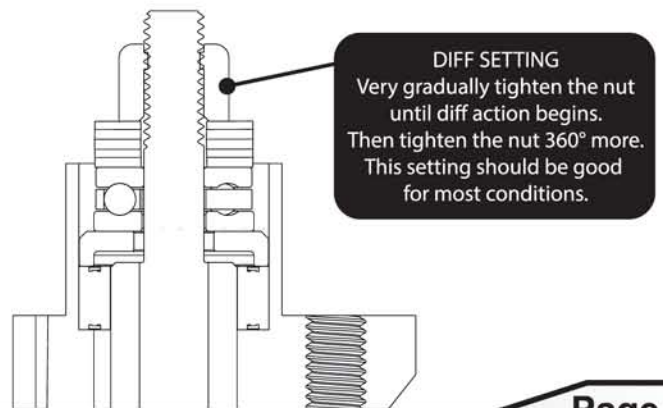
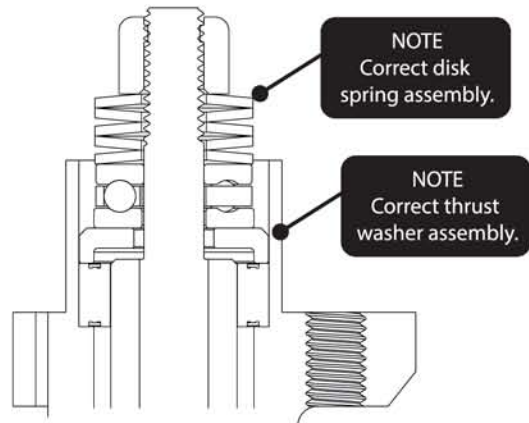
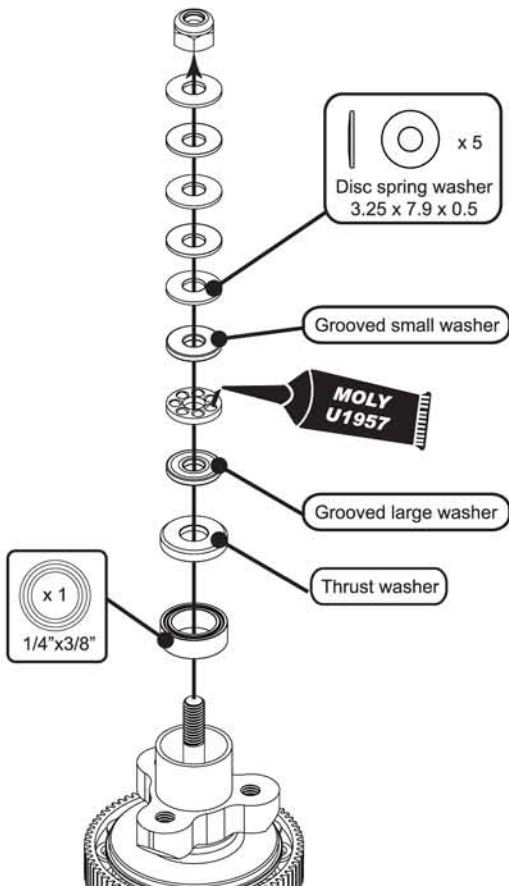
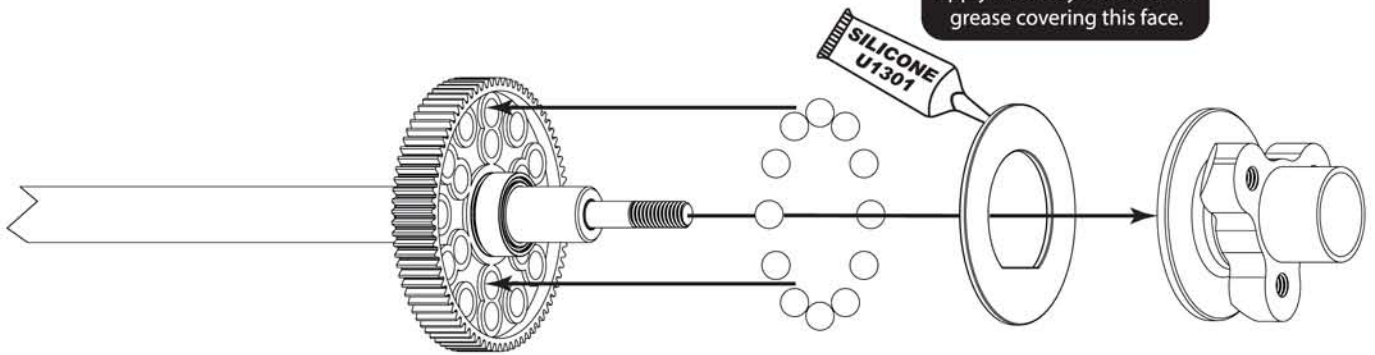
Step 15

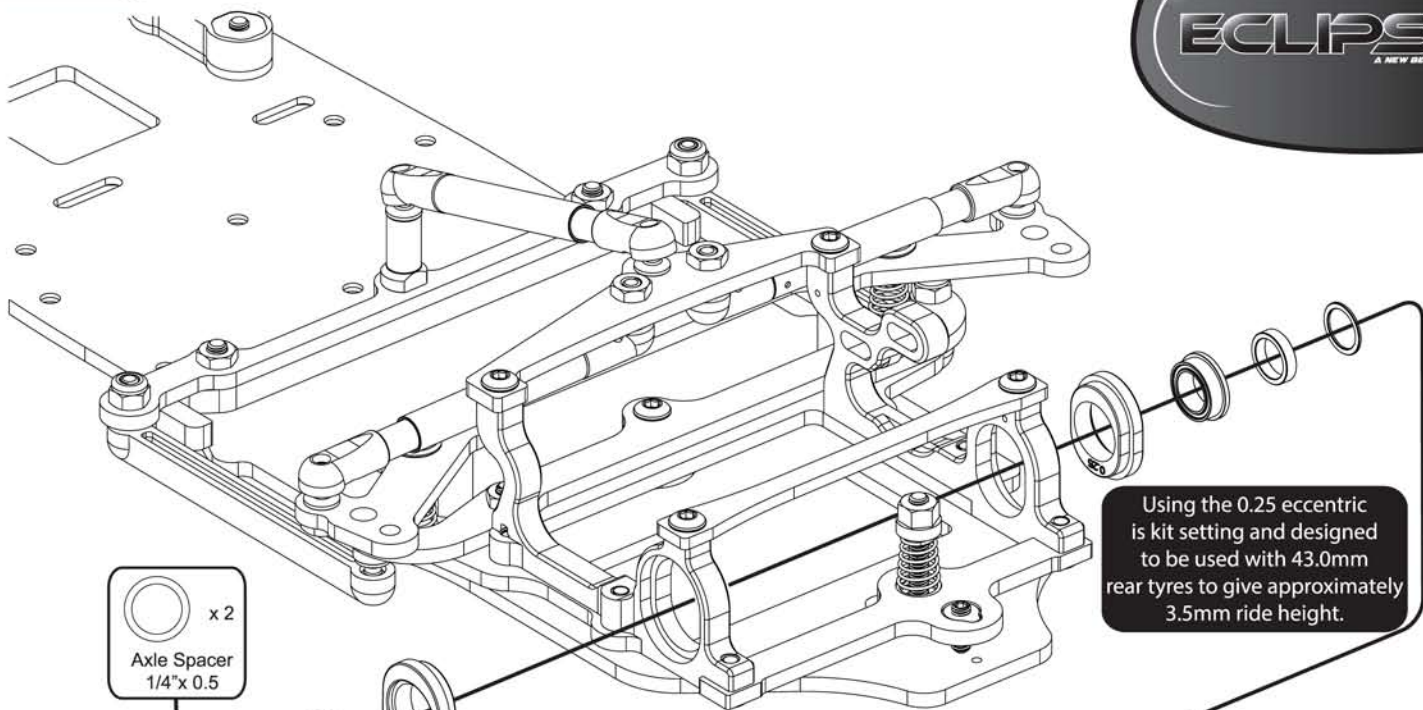
Apply a thin layer of silicone grease covering this face.



Step 16

Apply a thin layer of silicone grease covering this face.





Using the 0.25 eccentric is kit setting and designed to be used with 43.0mm rear tyres to give approximately 3.5mm ride height.

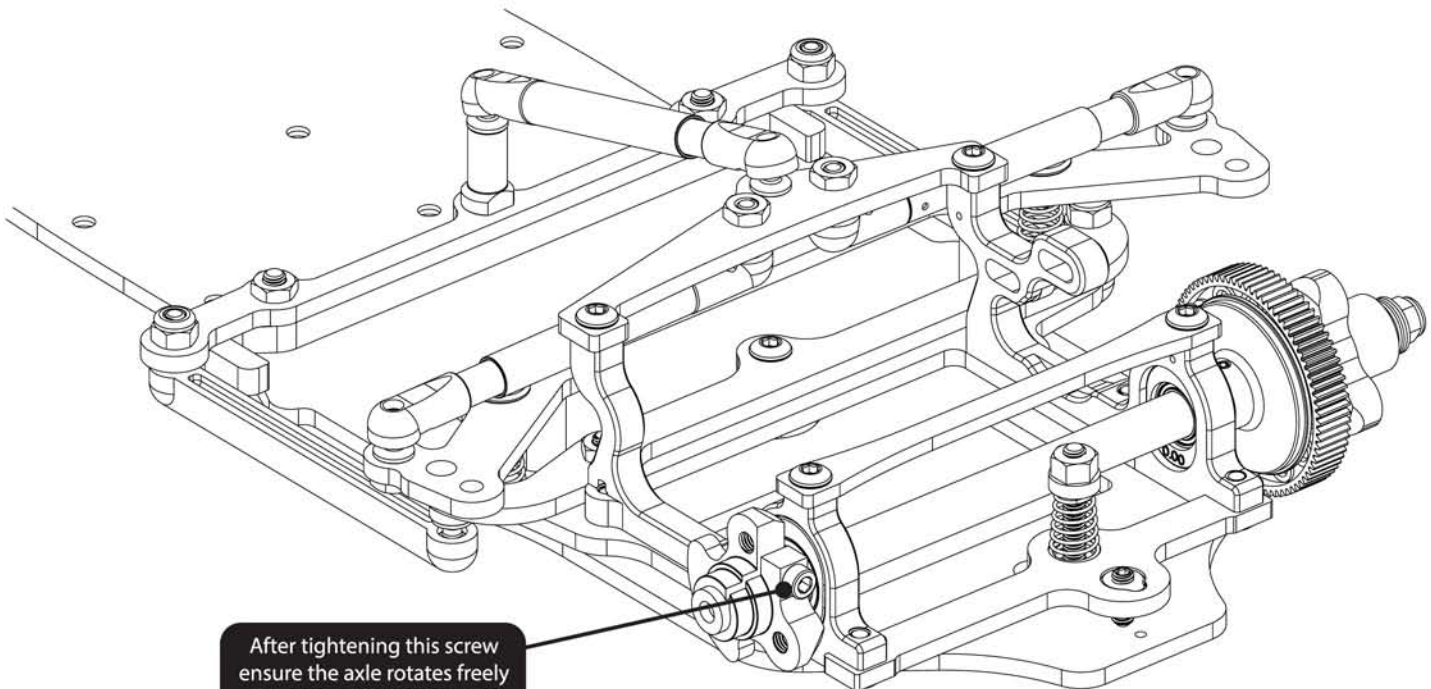
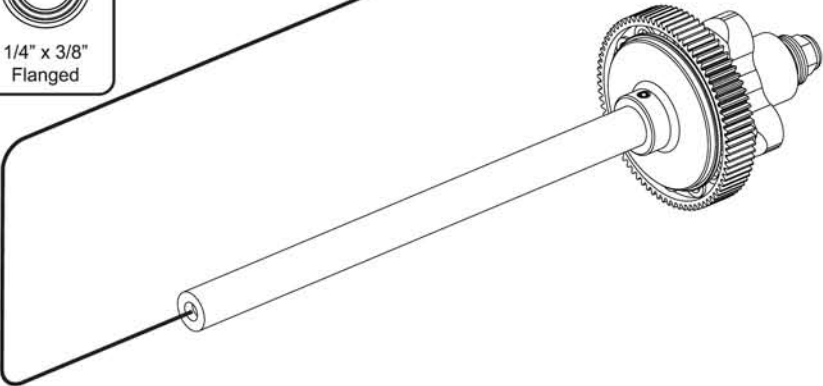
x 2
Axle Spacer
1/4"x 0.5

x 2
1/4" x 3/8"
Flanged

x 2
Axle Spacer
1/4"x 2.0

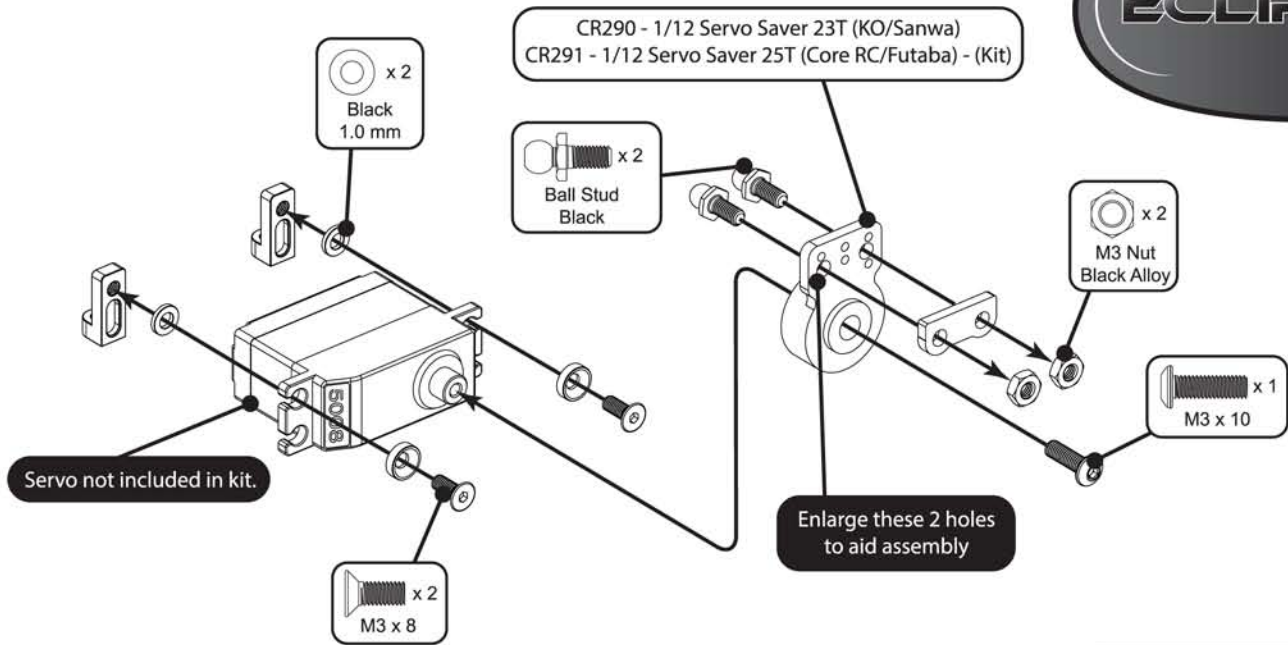
x 1
M2 x 10

The axle spacers may be used to adjust the rear track width of the car. Kit setting is illustrated.



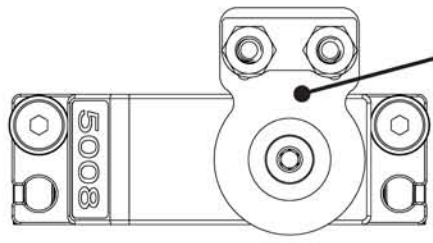
After tightening this screw ensure the axle rotates freely with a very small amount of end float.

Step 18 A



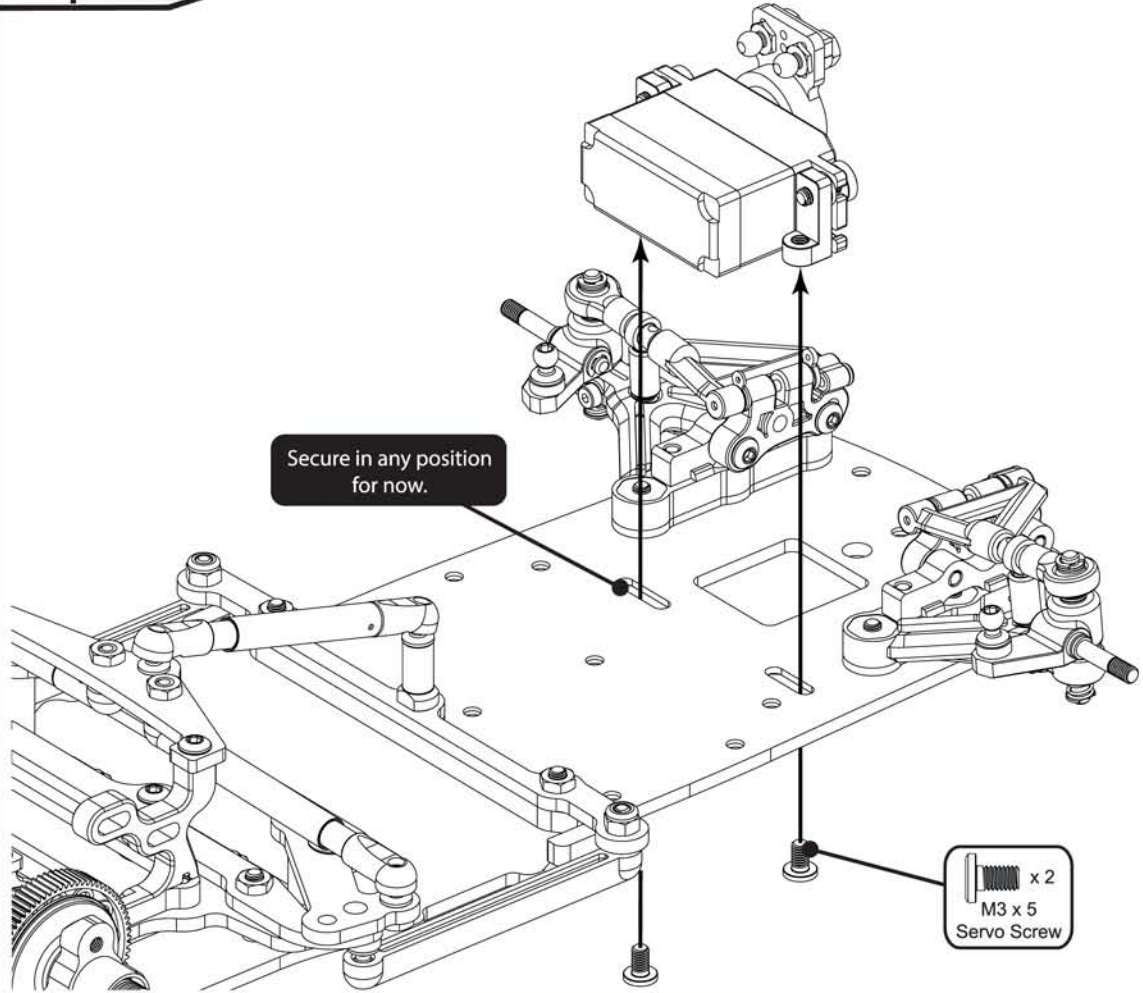
This illustration shows the mounting screws and spacers for CR194 - CORE RC - 1/12th/GT12 Servo.

For mounting other servos, use alternate length screws and spacers to achieve desired link angle. The standard position for KO30114 - KO Propo - RSX12 is using the included M3 x 10 screws and the 2mm black alloy washers.



Connect up your radio gear and set the servo to neutral before fitting the servo saver assembly as shown. Then use trim to make the servo saver vertical.

Step 18 B



KIT

K169 Eclipse Kit - C/F

CHASSIS PARTS

CR290 1/12 Servo Saver 23T for Sanwa & KO
 CR291 1/12 Servo Saver 25T for Core RC and Futaba
 U4710 Alloy Servo Post - GT12-1/12th pr
 U4950 Body Post Mouldings - Eclipse
 U4951 Roll Mast Mount - Eclipse
 U4952 Roll Mast - Eclipse
 U4953 Foam Bumper - Eclipse
 U4954 Front Stiffness Brace - Eclipse
 U4955 C/F - Pod Pivot Mount - Eclipse
 U4956 C/F - Pod Link Mount - Eclipse
 U4957 C/F - Pod Base - Eclipse
 U4958 C/F - Chassis - Eclipse
 U4959 C/F - Lipo Nest - Eclipse
 U4960 C/F - Side Link Mount - Eclipse
 U4961 C/F - Rear Body Mount - Eclipse
 U4962 C/F - Bumper Mount - Eclipse
 U4963 C/F - Pod Front Brace - Eclipse
 U4964 C/F - Pod Rear Brace - Eclipse
 U4965 C/F - Rear Spring Hanger - Eclipse
 U4967 Manual - Eclipse
 U7006 E-Clip 3.00mm - Eclipse - pk10
 U7008 Front Axle - Eclipse - pr
 U7017 Front Pivot Ball Plastic - Eclipse - pk4
 U7018 Front Hub Carriers Left/Right - Eclipse
 U7019 Kingpin Shims - Eclipse - pk6
 U7021 Plastic Parts A - Eclipse
 U7022 Plastic Parts B - Eclipse
 U7023 Plastic Parts C - Eclipse
 U7024 Camber Turnbuckle - Eclipse - pr
 U7025 Front Bulkhead - Eclipse
 U7027 0.0 Offset Lower Arm Insert-Eclipse-pk3
 U7028 Hingepin - Eclipse - pr
 U7029 Kingpin - Eclipse - pr

SUSPENSION

U3977 Moulded Links 57.2mm pk3
 U4222 Turnbuckle Adjuster HTT - 39mm - pr
 U4273 Pro Ball Stud Ultra Short - pk4
 U4274 Pro Ball Stud Short - pk4
 U4275 Pro Ball Stud Long - pk4
 U4551 Ball Sockets Short Pro-MiSevo - pk8 Black
 U4627 Chassis Post Long - Eclipse
 U4629 Damper Piston - Eclipse
 U4630 Damper Unit - Eclipse
 U4631 Damper Tube - Eclipse
 U4850 Low Ball Stud (pk4) - Eclipse
 U4851 Side Spring Seat (pr) - Eclipse
 U4968 Ball Sockets Low Profile - Eclipse - pk4
 U4969 Chassis Post Short - Eclipse

BODYSHELLS AND DECALS

MT014001 Montech - M12 Body for Pancar 1/12
 TB60011 Bomber TB-LMP Type A Bodyshell
 TB60014 Bomber LMP Body Type Dera
 U3478 Decal sheet - Schumacher and Racing-Cars.Com pk3
 U4966 Decal Sheet - Eclipse

SPRINGS

U4838 Rear Springs Black - Soft - Eclipse (pr)
 U4839 Rear Springs Silver - Med/Soft - Eclipse (pr)
 U4840 Rear Springs Gold -Med/Hard - Eclipse (pr)
 U4841 Rear Springs Nickel - Hard - Eclipse (pr)
 U4846 Spring Tuning Set Rear - Eclipse
 U4847 Rear Spring Seat - Eclipse
 U7009 Front Springs Medium- 400gf/mm - Eclipse (pr)
 U7010 Front Springs Hard- 570gf/mm - Eclipse (pr)
 U7011 Front Springs Medium-Soft - 330gf/mm - Eclipse (pr)
 U7012 Front Springs Soft - 275gf/mm - Eclipse (pr)
 U7013 Front Springs Super Soft - 175gf/mm - Eclipse (pr)
 U7014 Front Springs Blue - 240gf/mm - Eclipse (pr)
 U7015 Front Springs Red - 180gf/mm - Eclipse (pr)
 U7016 Front Springs Yellow - 210gf/mm - Eclipse (pr)

TRANSMISSION

CR513 Kimbrough - Spur Gear 78T - 64DP - #202
 CR514 Kimbrough - Spur Gear 88T - 64DP - #209
 CR515 Kimbrough - Spur Gear 76T - 64DP - #199
 CRW64072 Diff Spur 64DP 72T - For Diff or Spur Adapters
 U4112 S/Steel Shims 1/4x5/16"x0.004"- Eclipse
 U4855 Diff Washer (pr) - Eclipse
 U4861 Diff Rebuild Kit - Eclipse
 U4970 Rear Axle - Eclipse
 U4971 Diff Spacer Set - Eclipse
 U4972 Ride Height Adjusters - 0.00, 0.50, 1.00, 1.50 4prs
 U4973 Ride Height Adjusters - 0.25, 0.75, 1.25, 1.75 4prs
 U4974 LH Wheel Clamp - Eclipse
 U4975 RH Washer Carrier - Eclipse
 U4976 Assembled Diff - Eclipse
 U4977 Trans Housing LH - Eclipse
 U4978 Trans Housing RH - Eclipse

BEARINGS AND BALLS

H1031 Bearing Blaster Aerosol 500ml
 U1300 Axle Grease - Pot
 U1301 Silicone Diff Lube - Pot
 U1957 Moly Grease - Pot
 U4808 1/8 Chrome Steel Ball (pk12) - Eclipse
 U4809 Ball Bearing - 1/4x3/8x1/8 Shield - (pr)
 U4811 1/8 Silicon Nitride Ball (pk12)"
 U4812 Ceramic Bearing 1/8x5/16x9/64 Flanged (pr)
 U4979 Ceramic Bearing 1/4x3/8x1/8 Flanged (pr)
 U4980 Ball Bearing - 1/4x3/8x1/8 Flanged Yellow Shield - (pr)
 U4981 Ball Bearing - 1/8x5/16x9/64 Flanged Yellow Shield - (pr)

SPEED PACKS

U1550 SPEED PACK-Socket Wrenches-1.5/2.0/2.5/3.0mm
 U1552 SPEED PACK - R Clips
 U1606 SPEED PACK - Servo Tape - 30pk
 U1960 SPEED PACK - O rings; Various
 U2128 SPEED PACK - Grub-Set Screws M3 M4
 U2356 SPEED PACK - M3x16-30 Csk Screws (pk12)
 U2856 SPEED PACK - Sticky Cable Clips (pk10)
 U3021 SPEED PACK - M3x6 Csk Hd Hi-T
 U3022 SPEED PACK - M3x8 Csk Hd Hi-T
 U3023 SPEED PACK - M3x10 Csk Hd Hi-T
 U3024 SPEED PACK - M3x12 Csk - M3 x 10 Button Screws
 U3131 SPEED PACK - Alloy Spacers M3x7mm 0.5;1;2mm (pk18)
 U3572 SPEED PACK - M3x14 Grub Screw pk4
 U4155 SPEED PACK - M3 Csk Washers - Black Alloy (pk10)
 U4241 SPEED PACK - M3 Alloy Nyloc Nuts - Black - pk10
 U4314 SPEED PACK - Alloy Black M3 Washers - 18pc
 U4351 SPEED PACK - Shims 3.2x6x0.1mm (pk8)
 U4650 SPEED PACK - M3 Nyloc Nut Steel - Black (pk10)
 U4836 SPEED PACK Grub Screw M3 x 8mm Cup Point (10pcs)
 U4837 SPEED PACK M2.5x10 Cap Hd (pk8)
 U4982 SPEED PACK M2x4 Button Hd - Eclipse (4pcs)
 U4983 SPEED PACK Servo Screws - Eclipse (2pcs)
 U4984 SPEED PACK - M3 Alloy Nuts - Black - pk10
 U4985 SPEED PACK - M2 Nyloc Nut (pk4)
 U4986 SPEED PACK - M2x12 Cap Head Screws (pk4)
 U4987 SPEED PACK - Needle Roller 1.5x11.8 (pk8)
 U7102 SPEED PACK - M3 x 4 Button Hd (pk10)
 U7103 SPEED PACK - M3 x 6 Button Hd (pk10)
 U7104 SPEED PACK - M3 x 8 Button Hd (pk10)
 U7105 SPEED PACK - M3 x 10 Button Hd (pk10)
 U7112 SPEED PACK - M3 x 8 Cap Hd (pk10)
 U7113 SPEED PACK - M3 x 10 Cap Hd (pk10)
 U7122 SPEED PACK - M3 x 12 Csk Hd (pk10)
 U7125 SPEED PACK - M3 x 25 Csk Hd (pk10)
 U4210 SPEED PACK - Pinion Grub Screw Set pk10

SPEED PACKS - OPTION PARTS

CR310 Alloy Csk Hex Screws M3 x 6 pk10
 CR311 Alloy Csk Hex Screws M3 x 8 pk10
 CR312 Alloy Csk Hex Screws M3 x 10 pk10
 CR314 Alloy Button Head Hex Screws M3 x 6 pk10

SPEED PACKS - OPTION PARTS Cont....

| | |
|-------|---|
| CR315 | Alloy Button Head Hex Screws M3 x 8 pk10 |
| CR316 | Alloy Button Head Hex Screws M3 x 10 pk10 |
| CR320 | Titanium Csk Hex Screws M3 x 6 pk10 |
| CR321 | Titanium Csk Hex Screws M3 x 8 pk10 |
| CR322 | Titanium Csk Hex Screws M3 x 10 pk10 |
| CR513 | Kimbrough - Spur Gear 78T - 64DP - #202 |
| CR514 | Kimbrough - Spur Gear 88T - 64DP - #209 |
| U1572 | Titanium Turnbuckle; purple - 39mm (pr) |
| U1954 | Pro - Thrust Bearing |
| U3582 | Precision Balance Pivot Set |
| U4834 | M3x8 Alloy Cap Hd Rear Wheel Screws pk6 |
| U4862 | Black Alloy Washers 0.50mm (pk12) |
| U7007 | Aluminium Ball Stud Short - Eclipse - pk5 |
| U7020 | Kingpin Ti Coated + E-Clips - Eclipse - pr |
| U7026 | 0.5 Offset Lower Arm Insert - Eclipse - pk6 |

Pinions

| | |
|--------|---|
| CR6422 | Pinion Gear 64DP 22T (7075 Hard) |
| CR6423 | Pinion Gear 64DP 23T (7075 Hard) |
| CR6424 | Pinion Gear 64DP 24T (7075 Hard) |
| CR6425 | Pinion Gear 64DP 25T (7075 Hard) |
| CR6426 | Pinion Gear 64DP 26T (7075 Hard) |
| CR6427 | Pinion Gear 64DP 27T (7075 Hard) |
| CR6428 | Pinion Gear 64DP 28T (7075 Hard) |
| CR6429 | Pinion Gear 64DP 29T (7075 Hard) |
| CR6430 | Pinion Gear 64DP 30T (7075 Hard) |
| CR6431 | Pinion Gear 64DP 31T (7075 Hard) |
| CR6432 | Pinion Gear 64DP 32T (7075 Hard) |
| CR6433 | Pinion Gear 64DP 33T (7075 Hard) |
| CR6434 | Pinion Gear 64DP 34T (7075 Hard) |
| CR6435 | Pinion Gear 64DP 35T (7075 Hard) |
| CR6436 | Pinion Gear 64DP 36T (7075 Hard) |
| CR6437 | Pinion Gear 64DP 37T (7075 Hard) |
| CR6438 | Pinion Gear 64DP 38T (7075 Hard) |
| CR6439 | Pinion Gear 64DP 39T (7075 Hard) |
| CR6440 | Pinion Gear 64DP 40T (7075 Hard) |
| CR6441 | Pinion Gear 64DP 41T (7075 Hard) |
| CR6442 | Pinion Gear 64DP 42T (7075 Hard) |
| CR6443 | Pinion Gear 64DP 43T (7075 Hard) |
| CR6444 | Pinion Gear 64DP 44T (7075 Hard) |
| CR6445 | Pinion Gear 64DP 45T (7075 Hard) |
| CR6446 | Pinion Gear 64DP 46T (7075 Hard) |
| U3622 | Pinion; Hard Alloy 64dp - 22T |
| U3623 | Pinion; Hard Alloy 64dp - 23T |
| U3624 | Pinion; Hard Alloy 64dp - 24T |
| U3625 | Pinion; Hard Alloy 64dp - 25T |
| U3626 | Pinion; Hard Alloy 64dp - 26T |
| U3627 | Pinion; Hard Alloy 64dp - 27T |
| U3628 | Pinion; Hard Alloy 64dp - 28T |
| U3629 | Pinion; Hard Alloy 64dp - 29T |
| U3630 | Pinion; Hard Alloy 64dp - 30T |
| U3631 | Pinion; Hard Alloy 64dp - 31T |
| U3632 | Pinion; Hard Alloy 64dp - 32T |
| U3633 | Pinion; Hard Alloy 64dp - 33T |
| U3634 | Pinion; Hard Alloy 64dp - 34T |
| U3635 | Pinion; Hard Alloy 64dp - 35T |
| U3636 | Pinion; Hard Alloy 64dp - 36T |
| U3637 | Pinion; Hard Alloy 64dp - 37T |
| U3638 | Pinion; Hard Alloy 64dp - 38T |
| U3639 | Pinion; Hard Alloy 64dp - 39T |
| U3640 | Pinion; Hard Alloy 64dp - 40T |
| U3641 | Pinion; Hard Alloy 64dp - 41T |
| U3642 | Pinion; Hard Alloy 64dp - 42T |
| U3643 | Pinion; Hard Alloy 64dp - 43T |
| U3644 | Pinion; Hard Alloy 64dp - 44T |
| U3645 | Pinion; Hard Alloy 64dp - 45T |
| U3646 | Pinion; Hard Alloy 64dp - 46T |
| U4210 | SPEED PACK - Pinion Grub Screw Set pk10 |

TEAM MERCHANDISE

| | |
|-------|--|
| CR298 | CORE RC Hauler Bag |
| G310 | Schumacher Rubber Pit Mat - 750mm x 500mm |
| G338 | 2 Tone Beanie Knitted Hat |
| G339L | Jacket - 3 Layer Softshell; Black - L 44inch |
| G339M | Jacket - 3 Layer Softshell; Black - M 41inch |
| G339S | Jacket - 3 Layer Softshell; Black - S - 38inch |

TEAM MERCHANDISE Cont....

| | |
|------------|--|
| G339XL | Jacket - 3 Layer Softshell; Black - XL 46inch |
| G339XS | Jacket - 3 Layer Softshell; Black - XS - 34inch |
| G339XXL | Jacket - 3 Layer Softshell; Black - XXL 48inch |
| G339XXXL | Jacket - 3 Layer Softshell; Black - XXXL 50inch |
| G340 | Schumacher Baseball Cap - Black |
| G342L | T - Navy - Large 100% cotton knit mens |
| G342M | T - Navy - Medium 100% cotton knit mens |
| G342S | T - Navy - Small 100% cotton knit mens |
| G342XL | T - Navy - X-Large 100% cotton knit mens |
| G342XXL | T - Navy - XX-Large 100% cotton knit mens |
| G342XXXL | T - Navy - XXX-Large 100% cotton knit mens |
| G342XXXXL | T - Navy - XXXX-Large 100% cotton knit mens |
| G342XXXXXL | T - Navy - XXXXX-Large 100% cotton knit mens |
| G343L | Sweat-Navy-Large 80% cotton,20% polyester knit men |
| G343M | Sweat-Navy-Med, 80% cotton,20% polyester knit men |
| G343S | Sweat-Navy-Small,80% cotton,20% polyester knit men |
| G343XL | Sweat-Navy-XL, 80% cotton,20% polyester knit men |
| G344L | Polo - Navy - Large, 100% cotton knit mens |
| G344M | Polo - Navy - Med, 100% cotton knit mens |
| G344S | Polo - Navy - Small, 100% cotton knit mens |
| G344XL | Polo - Navy - X-Large, 100% cotton knit mens |
| G344XXL | Polo - Navy - XX-Large, 100% cotton knit mens |
| G344XXXL | Polo - Navy - XXX-Large, 100% cotton knit mens |
| G344XXXXL | Polo - Navy - XXXX-Large, 100% cotton knit mens |
| G344XXXXXL | Polo - Navy - XXXXX-Large, 100% cotton knit mens |
| G355 | Schumacher Hauler Bag |
| G356 | Handle for Hauler Bag |
| G357 | Small Draw for Hauler Bag |
| G358 | Medium Draw for Hauler Bag |
| G359 | Large Draw for Hauler Bag |

ELECTRONICS

| | |
|-----------|---|
| CR162 | CORE RC Sensor Checking Widget |
| CR175 | GT12 Power Plant-PACE ESC/SP 13.5/1S Lipo |
| CR249 | Futaba Servo Wires Black |
| CR250 | JR Servo Wires Black |
| SK-500015 | Corner Weight System |

SERVOS

| | |
|--------------|---------------------------------------|
| CR194 | CORE RC -5008- Servo 5Kg .08 Sec 12th |
| KO30114 | Servo - RSx 12 - .13 - 7.5Kg |
| SA107A53811A | SRG-HR Mini Digital Servo |

TRANSMITTERS AND RECIEVERS

| | |
|--------------|---|
| CR151 | CODE 2.4G FHSS LCD 2 Stick TxRx |
| CR152 | CODE 2.4G FHSS LCD - Rx Only |
| CR153 | CODE 2.4G FHSS Sport 2 Stick TxRx |
| CR154 | CODE 2.4G FHSS Sport - Rx Only |
| CR277 | CODE 2.4G FHSS Steerwheel Radio TxRx |
| CR278 | CODE 2.4G FHSS - Rx Only |
| CR498 | Battery Holder - Code Stick Transmitter |
| KO21005 | KR-211FH 2.4GHz FHSS Receiver |
| KO21007 | KR-413FH Micro Receiver |
| KO80540 | EX-1 Ver 3 (KIY) KR-413FH Set - TX + RX |
| KO80700 | Esprit IV - Stick Radio Set |
| SA101A30885A | MX-V Radio Set |
| SA101A31671A | M12S Radio Set |
| SA101A31691A | M12S Radio Set - Ltd Ed-Piano Black |
| SA101A31871A | MT-4S Radio Set |
| SA101A31971A | MT-S Radio Set |
| SA101A32071A | EXZES ZZ Radio Set |
| SA107A40843A | RX-371FS FHSS-2 Receiver |
| SA107A40973A | RX-451R Receiver |
| SA107A41044A | RX-461 Receiver for MT-4 |
| SA107A41074A | RX-380 FHSS-3 Receiver |
| SA107A41111A | RX-471 Receiver |
| SA107A41117A | RX-472 Telemetry/SSL Receiver |
| SA107A41131A | RX-471WP FH4 Waterproof Receiver |
| SA107A41144A | RX-371WP FHSS-2 Waterproof Receiver |
| SA107A41151A | RX-471 Dual ID Receiver |
| SA107A41251A | RX-481 Receiver |
| SA107A41257A | RX-482 Telemetry/SSL Receiver |

BRUSHLESS ACCESSORIES

| | |
|-----------|------------------------------------|
| CR134 | Core Sensor Lead; 180mm |
| CR254 | 150mm Flat Bonded Flex Sensor Wire |
| HW2361200 | XERUN-Sensor Cable-120mm |
| NR925315 | NOSRAM Sensor Wire HighFlex 150mm |

BRUSHLESS ESC AND MOTOR COMBO

| | |
|----------|--|
| SP000194 | Reventon-R ESC-2S-Comp V3.0-13.5R Combo |
| SP000201 | Reventon Stock Club Race 13.5 Combo Comp V3 Motor |
| SP000208 | Reventon Stk Clb Rce 13.5R Combo V3 Fix Trng Motor |
| SP001039 | Reventon Pro V1.1 ESC Comp V3.0-13.5R Combo |
| SP001147 | Reventon Pro V1.1 ESC MMM 13.5R Combo |

BRUSHLESS SPEEDCONTROLS

| | |
|---------------|-----------------------------------|
| CR173 | PACE 45R Brushless ESC 1s/2s |
| CR174 | PACE 45R/60R Programming Card |
| CR199 | PACE 60R Brushless ESC 1S/2S |
| HW30112121051 | XERUN-V3.1-1S-BL-ESC-120A-Black |
| NR90960 | Comet EVO Brushless Speed Control |
| NR90970 | Comet HD Brushless Speed Control |
| SK-300048 | Toro 120A 1S BL Sensor ESC |

BATTERIES

| | |
|---------------|---|
| CR007 | CORE RC Silicone Wire 12g - Red/Black 2x50cm |
| CR008 | CORE RC RED Connector with 2x4mm Tubes |
| CR009 | CORE RC RED Connector with 2x4mm Males |
| CR050 | CORE RC Silicone Wire 12g - Red 1 Metre |
| CR051 | CORE RC Silicone Wire 12g - Black 1 Metre |
| CR052 | CORE RC Silicone Wire 12g - Blue 1 Metre |
| CR115 | CORE RC Silicone Wire 12g - Red/Black/Blue 3x50cm |
| CR279 | 1S Lipo 8000mAh 100C Pro Series - 3.7V |
| CR287 | Silicone Wire Black 14 AWG - 1Mtr |
| CR288 | Silicone Wire Black 16 AWG - 1Mtr |
| CR292 | CORE RC-3200mAhR 3.7V 30/60C 1S Lipo |
| FAN26187 | Fantom 1S 7800mAh lipo |
| IPCC1S7000SV1 | Intellect-Lipo 7000mAh 100C 1S SHV |
| IPCC1S7000V9 | Intellect Lipo 7000mAh 1S- 90C- 3.7V G4 |
| IPCC1S8000SV1 | Intellect-Lipo 8000mAh 1s 100C 3.7v SHV |
| MR-SB | MR33 Lipo Bag |
| NR999518 | Lipo 7500 1/12 X-treme 1S 110C/55C-3.7V |
| NR999542 | Lipo 8100 1/12 X-treme 1/12 1S-3.7V |

PAINT

| | |
|-------|-----------------------------------|
| CR600 | Aerosol Paint - White Knight |
| CR601 | Aerosol Paint - Yellow Taxi |
| CR602 | Aerosol Paint - Fire Red |
| CR603 | Aerosol Paint - French Blue |
| CR604 | Aerosol Paint - Petrol Blue |
| CR605 | Aerosol Paint - Racing Green |
| CR606 | Aerosol Paint - Jet Black |
| CR607 | Aerosol Paint - Lime Green |
| CR608 | Aerosol Paint - Tangerine |
| CR609 | Aerosol Paint - Hot Pink |
| CR610 | Aerosol Paint - Berry Purple |
| CR611 | Aerosol Paint - Neon Yellow |
| CR612 | Aerosol Paint - Neon Orange |
| CR613 | Aerosol Paint - Neon Red |
| CR614 | Aerosol Paint - Neon Green |
| CR615 | Aerosol Paint - Neon Fire |
| CR616 | Aerosol Paint - Neon Carrot |
| CR617 | Aerosol Paint - Neon Pink |
| CR618 | Aerosol Paint - Neon Blue |
| CR619 | Aerosol Paint - Metallic Blue |
| CR620 | Aerosol Paint - Metallic Graphite |
| CR621 | Aerosol Paint - Metallic Silver |
| CR622 | Aerosol Paint - Metallic Purple |
| CR623 | Aerosol Paint - Metallic Green |
| CR624 | Aerosol Paint - Metallic Red |
| CR625 | Aerosol Paint - Metallic White |
| CR626 | Aerosol Paint - Clear Sparkle |
| CR627 | Aerosol Paint - True Chrome |
| CR628 | Aerosol Paint - Clear Backing |
| CR629 | Aerosol Paint - Window Tint |
| CR631 | Aerosol Paint - Spearmint |

TOOLS

| | |
|----------|---|
| AM150140 | Nut Driver 4.0 x 60 |
| CR044 | CORE RC - Curved Body Scissors |
| CR045 | CORE RC - Straight Body Scissors |
| CR102 | Magnetic Parts Tray - Purple |
| CR103 | Magnetic Parts Tray - Black |
| CR148 | CORE RC - Polybutler Pit Box; Black |
| CR248 | Hobby Bench Vice |
| CR271 | 4 Way Wrench Small - 4.0,4.5,5.5,7.0mm |
| ED140140 | Philips Screwdriver 4.0 x 120 |
| H1026 | Ride Height Gauge; Purple Alloy; 0-10mm |
| H1032 | Alloy Camber Gauge - 1/10th |
| H1056 | Loctite 243 Thread Lock 3ml |
| U2789 | Schumacher Hex Driver - 1.5mm |
| U2790 | Schumacher Hex Driver - 2.0mm |
| U2791 | Schumacher Hex Driver - 2.5mm |
| U2792 | Schumacher Hex Driver - 3.0mm |
| U2795 | Schumacher M3 Nut Driver |
| U2818 | Schumacher Body Reamer |
| U4229 | Steel Spanner - 5.5mm/3.9mm |

GENERAL ACCESSORIES

| | |
|-------|---|
| CR005 | CORE RC Battery Tape - Black |
| CR006 | CORE RC Battery Tape - Blue |
| CR037 | CORE RC - Battery Tape - Purple |
| CR043 | CORE RC - Silver X-Weights 16pcs |
| CR058 | CORE RC - Black X-Weights 16pcs |
| CR060 | Small Body Clip 1/10 - Gloss Black (8) |
| CR061 | Small Body Clip 1/10 - Silver (8) |
| CR062 | Small Body Clip 1/10 - Gold (8) |
| CR063 | Small Body Clip 1/10 - Fluorescent Yellow (8) |
| CR064 | Small Body Clip 1/10 - Fluorescent Green (8) |
| CR065 | Small Body Clip 1/10 - Fluorescent Red (8) |
| CR066 | Small Body Clip 1/10 - Metallic Green (8) |
| CR067 | Small Body Clip 1/10 - Metallic Red (8) |
| CR068 | Small Body Clip 1/10 - Metallic Blue (8) |
| CR069 | Small Body Clip 1/10 - Metallic Purple (8) |
| CR159 | Core RC - Battery Tape - Orange |
| CR197 | CORE RC - Glass Setup Board |
| CR297 | CORE RC - Neoprene Bag |
| CR499 | 18 Compartment Parts Box |
| CR518 | Super Glue Nozzles - pk10 |
| CR519 | Under LiPo Weight 35g brass 1S/Shorty |
| CR522 | CORE RC - 522 Pro Tyre Glue + 2 Nozzles |
| CR548 | CORE RC - Tool Bag |
| CR549 | CORE RC - Oil Bag |
| G353 | Schumacher Glass Setup Board |
| G354 | Schumacher - Neoprene Bag |
| J003 | Contact RC - Glass Setup Board |
| J004 | Contact RC - Neoprene Bag |
| U4831 | Aerial Tube Cap - Black - 6pk |

CHARGERS

| | |
|--------------|---|
| CR031 | UDC Charger Connector Set - 8pcs |
| CR161 | UAC50 Charger 12v/110-240v 6A |
| CR492 | LAC20 - 1S-4S 20W AC Charger |
| SK-100013 | SKY RC - Quattro B6 Charger 50Wx4 AC/DC |
| SK-100064 | T6755 Charger 7A 55W AC/DC Touch Screen |
| SK-100068-01 | SKY RC 6 x 80+ Charger Blue Version |
| SK-100069 | Synchronous DC Charger 1000W 40A |
| SK-100072 | T6200 Charger 12A 200W DC Touch Screen |
| SK-100078-01 | SKY RC RS16 - 180W 16A DC Charger |
| SK-100084 | Imax B6 Mini Charger 6A 60W DC |
| SK-100087 | Ultimate Duo Charger 700Wx2 - 30A DC |
| SK-100089 | D100 Dual Charger 100W AC or 2x100w DC - 10A |
| SK-100097 | D200 AC/DC Dual Charger 200W 20A + soldering iron |
| SK-100104 | Q200 Quattro Charger |
| SK-100106 | S60 AC Charger 60W 6A |
| SK-200013-01 | eFuel 30A 540W Power Supply |
| SK-200015 | eFuel 50A 1200W Power Supply |
| SK-200017-01 | SKY RC 17A Power Supply (UK Plug) |
| TP610C | Thunder Power 10 Amp DC Balance Charger |
| TP610C-ACDC | Thunder Power 10 Amp AC/DC Balance Charger |
| TP820CD | Dual Port 20A DC charger/Cycler |

BRUSHLESS MOTORS

| | |
|---------------|--|
| FAN19480S | Fantom Motor 13.5 Type M-Spec |
| FAN19481S | Fantom Motor 13.5 Type RS - Spec |
| HW30401020047 | XERUN-1/10-Sensored-BL-Motor-V10-13.5T |
| HW30408001 | Juststock-1/10-Sensored-BL-Motor-13.5T |
| HW90040120 | XERUN-1/10-Sensored BL Motor 13.5T |
| NR91844 | Nosram Pure 2 BL Spec Racing Motor - 13.5T |
| SK-400003-34 | ARES Pro BL Motor 13.5T Spec |
| SP000038 | 1/10 Competition MMM Series 13.5R BL Motor |
| SP001231 | Speed Passion Comp V4.0 Motor 13.5T |
| SP138135V3 | Speed Passion V3.0 Comp BL Motor; 13.5T |
| TPM-540A135 | Thunder Power 13.5T Stock Spec 540 BL Motor |
| HW30401100 | XERUN-V10-3.5T-1/10-Sensored-BL-Motor-Black-G2 |
| SP001220 | Speed Passion Comp V4.0 Motor 3.5T |
| HW30401103 | XERUN-V10-6.5T-1/10-Sensored-BL-Motor-Black-G2 |
| SP001226 | Speed Passion Comp V4.0 Motor 6.5T |
| NR90674 | Nosram Pure 2 BL - 6.5T |

1/12 Foams; Circuit - NEW JT2

| | |
|----------|---|
| JT2-30FJ | Foam Tyres - 1/12 Front Pink 30Sh J Foam |
| JT2-32FJ | Foam Tyres - 1/12 Front Magenta 32Sh J Foam |
| JT2-35FJ | Foam Tyres - 1/12 Front Double Pink 35Sh J Foam |
| JT2-30FB | Foam Tyres - 1/12 Front Gold 30Sh Bomber |
| JT2-30RJ | Foam Tyres - 1/12 Rear Pink 30Sh J Foam |
| JT2-32RJ | Foam Tyres - 1/12 Rear Magenta 32Sh J Foam |
| JT2-30RB | Foam Tyres - 1/12 Rear Gold 30Sh Bomber |

1/12 Foams; Circuit - JT

| | |
|--------|---|
| JT30FA | Foam Tyres - 1/12 Front Pink 30Sh A Foam |
| JT32FA | Foam Tyres - 1/12 Front Magenta 32Sh A Foam |
| JT35FA | Foam Tyres - 1/12 Front Double Pink 35Sh A Foam |
| JT28RA | Foam Tyres - 1/12 Rear Soft Pink 28Sh A Foam |
| JT30RA | Foam Tyres - 1/12 Rear Pink 30Sh A Foam |
| JT32RA | Foam Tyres - 1/12 Rear Magenta 32Sh A Foam |
| U4828 | Tyre Truer Rear Wheel Insert - 1/12th |

TYRE ADDITIVE

| | |
|----------|---------------------------------|
| NR96010 | NOSRAM Traction Additive Carpet |
| SXT00030 | SXT 3.0 Traction Compound |
| C6400 | CS High Grip Additive |
| C6460 | CS Speed Grip Carpet |

G355 - Schumacher Hauler Bag

The Schumacher hauler bag sets a new standard of transporting all your race gear to the track. Super stylish black, grey and white provides a distinctive look but carries that traditional Schumacher branding!

The bag is super easy to manoeuvre with it's 2 position, push button, lightweight aluminium handle and robust moulded wheels. The bag also incorporates a shoulder strap for more carrying options. The handle is also replaceable if somehow it gets damaged. The zips on the Schumacher hauler are also super tough, with upgraded fastenings compared to other bags on the market.

Undo the main zips to unveil the 5 tough corrugated boxes, one large, three medium and one small, (all available separately as spare parts) with moulded supports to provide even more strength.

Underneath the top zipped cover you can find a handy tool tray and positions for all your favourite tools which can be securely fastened in with the elastic straps.

The bag also has handy pockets for many items including one large on the rear to take that all important set up board.

Dimensions

54 x 37 x 60cm

Not including handle.

Box sizes;

1x Large - 32x19.5x50cm

3x Medium - 32x24.5x12cm

1x Small - 32x21.5x12cm

The Schumacher Hauler bag requires assembly.
Schumacher Set up board and tools not included.

Spare Parts

G356 - Handle For Hauler Bag

G357 - Small Draw for Hauler Bag

G358 - Medium Draw for Hauler Bag

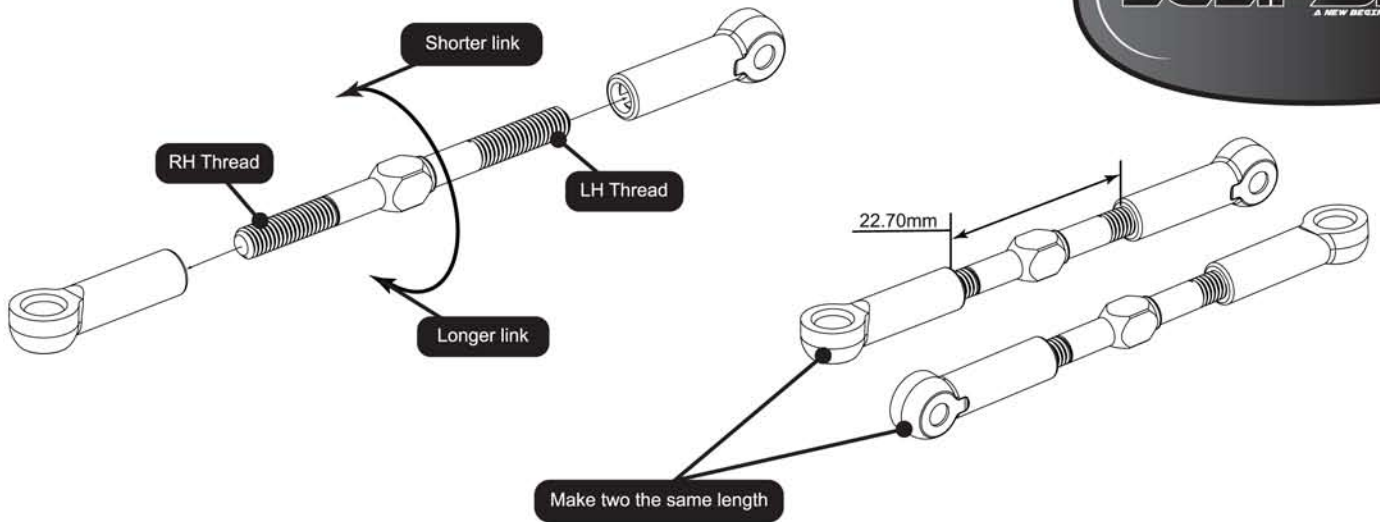
G359 - Large Draw for Hauler Bag

G353 - Schumacher Glass Setup Board



Step 19 A

ECLIPSE
A NEW BEGINNING

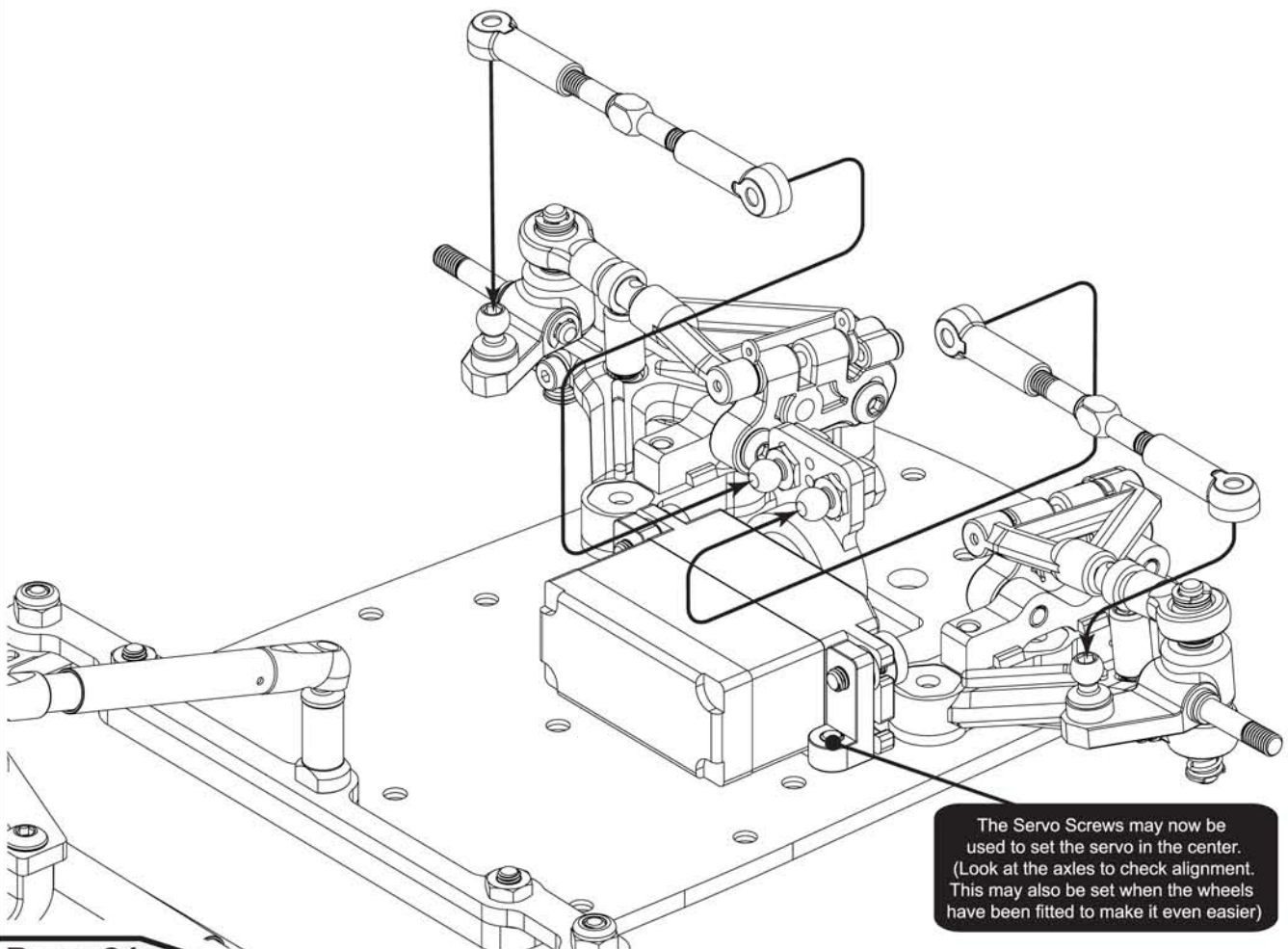


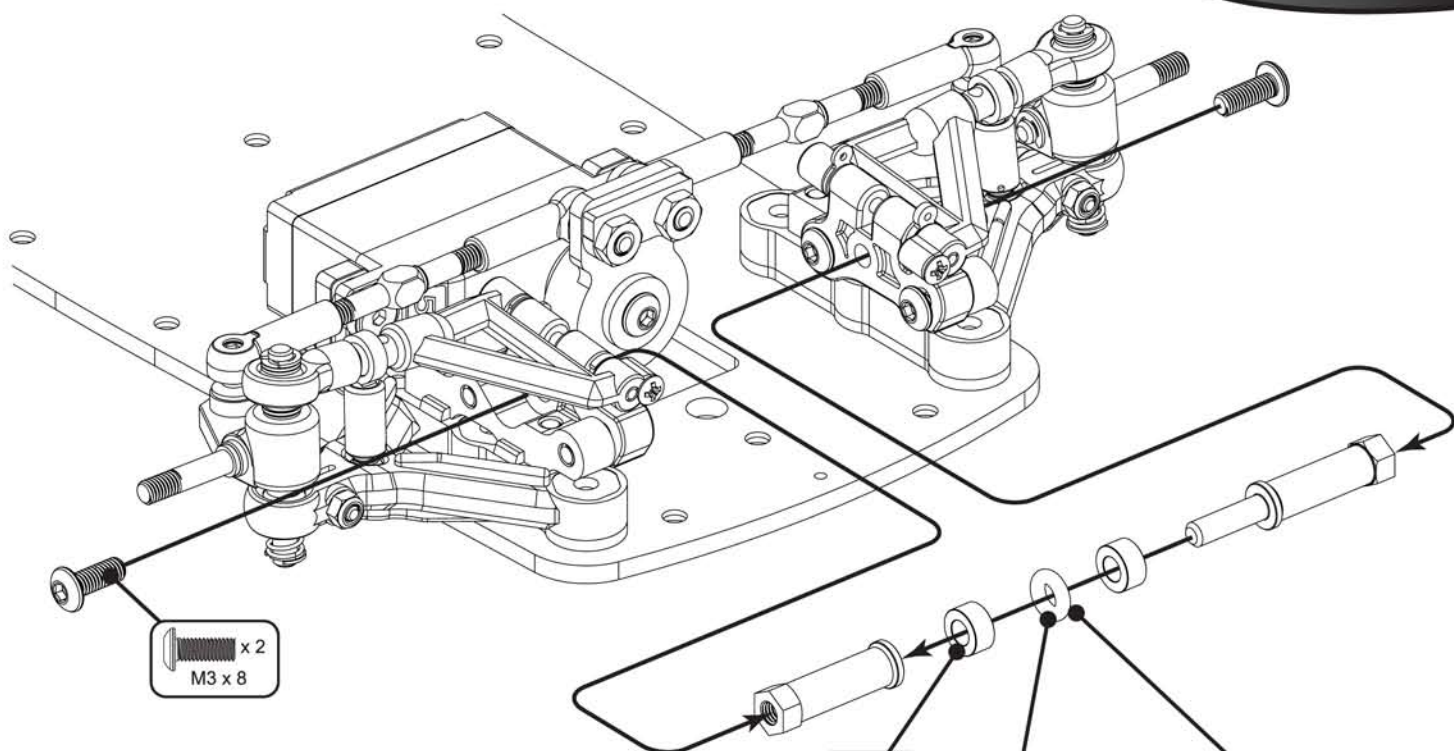
Carefully screw the sockets onto the turnbuckle until no threads are visible. Then undo them to the correct length. This allows for easier adjustment on the car. (Greasing the threads will also help)

Note the shape of the turnbuckle. This side of the turnbuckle is the left hand thread.



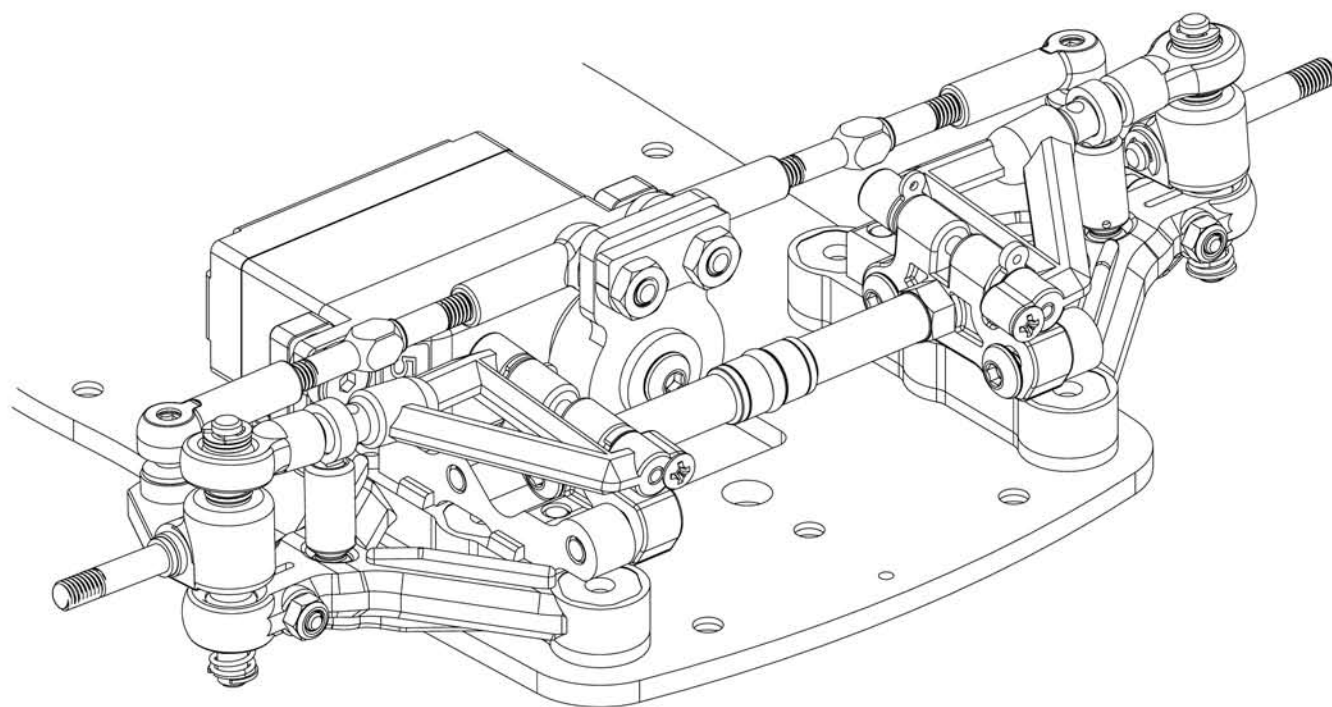
Step 19 B



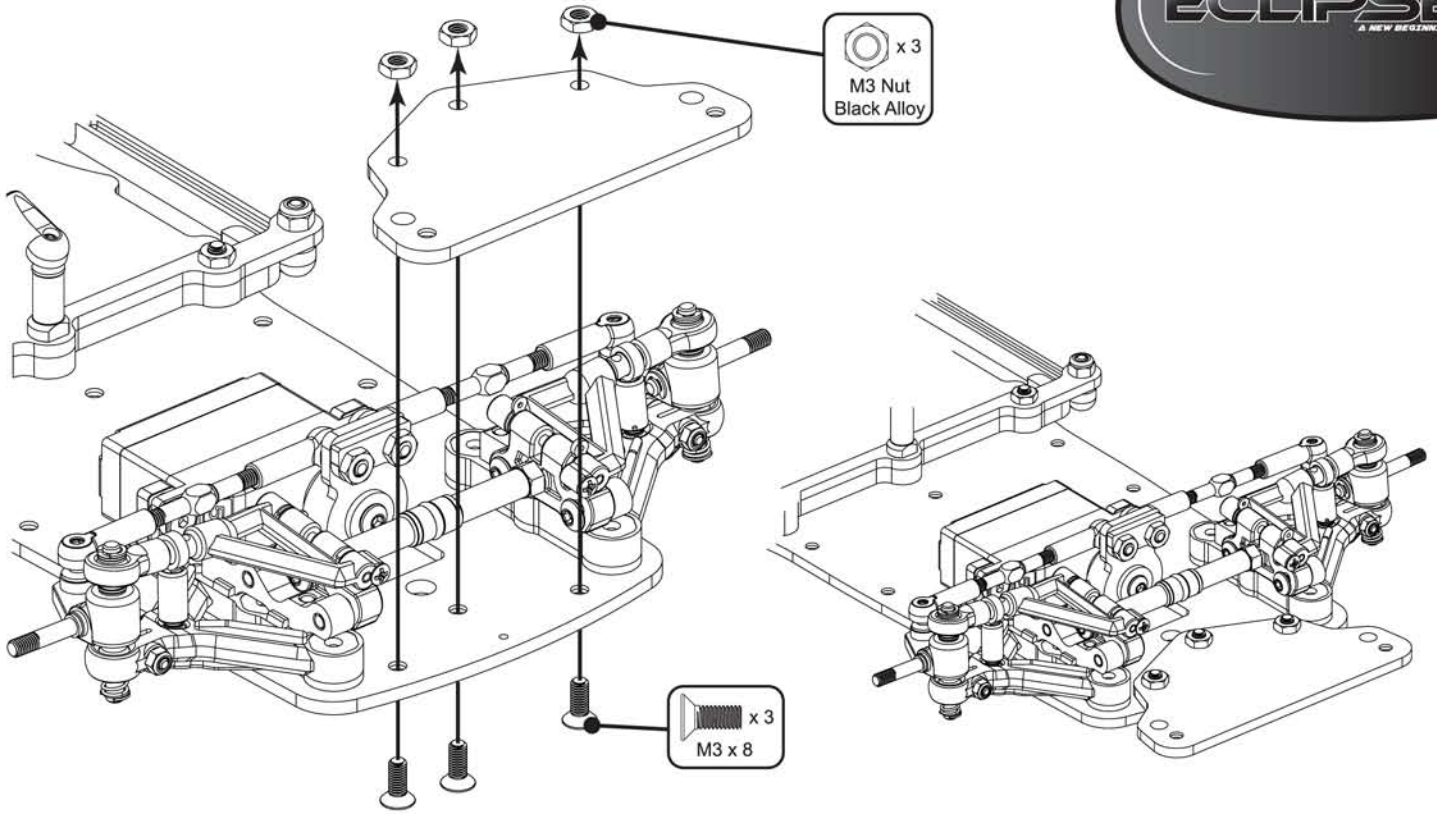


The front end brace may be removed completely to give maximum flexibility.

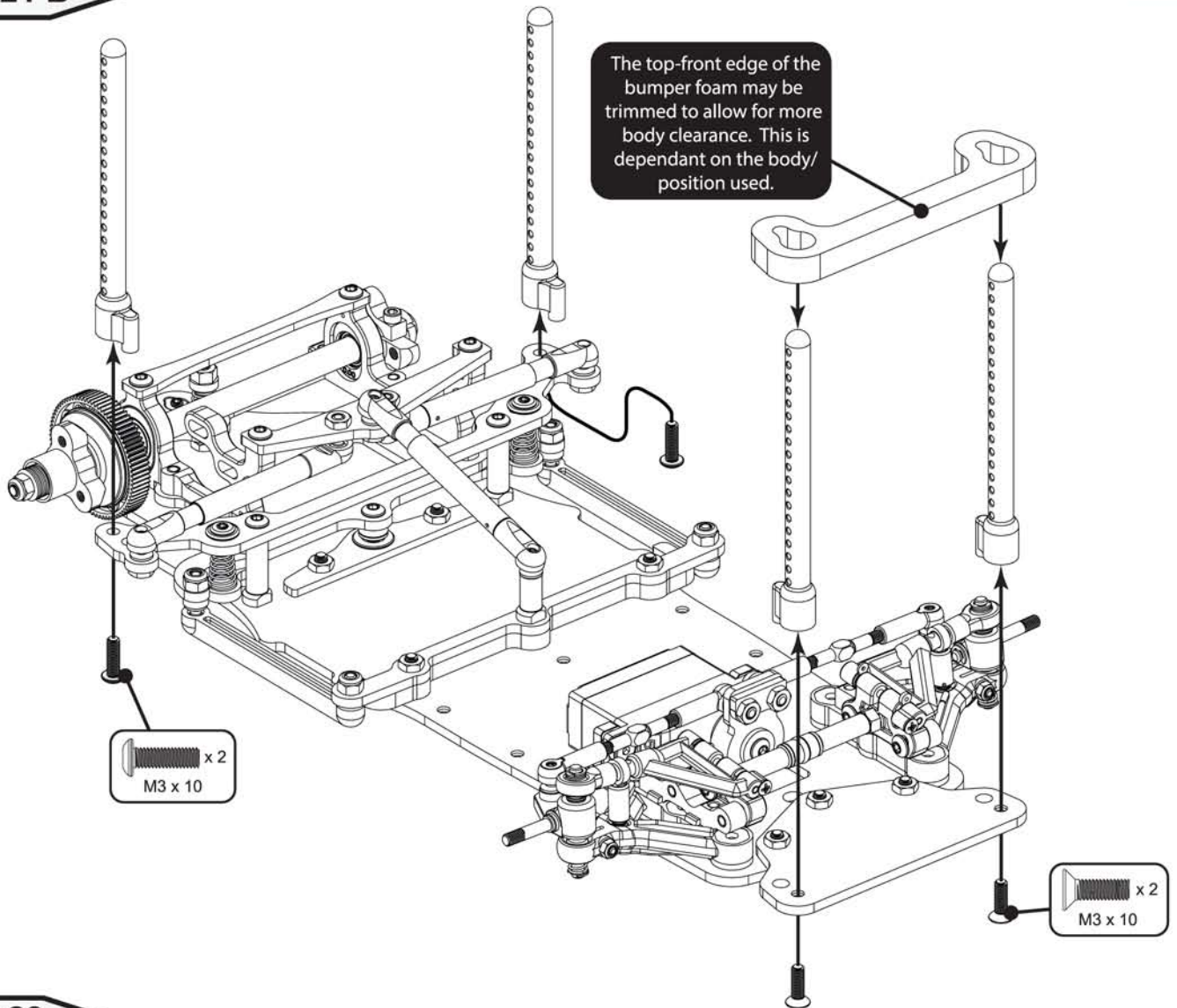
The o-ring and spacers on the front end brace may be adjusted to tune the stiffness of the front end. Add or remove o-rings or spacers but ensure to leave zero end float.



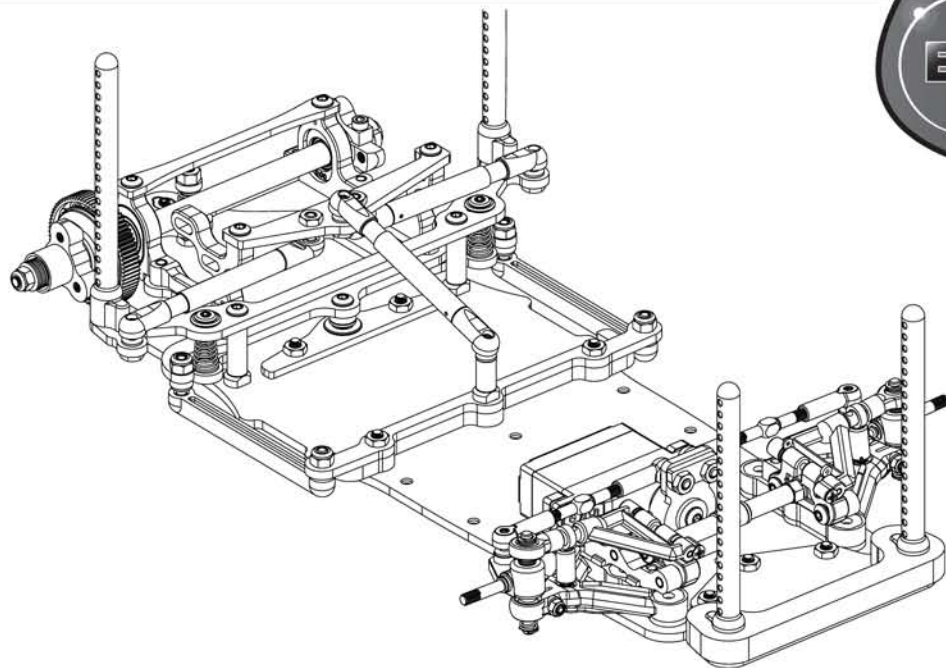
Step 21 A



Step 21 B



Step 21 C

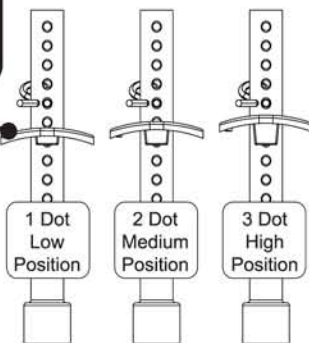


Step 22

The bodyposts may be trimmed down for looks and aerodynamics. A sharp knife or side cutters may be used. Alternatively use: AM190041 - Arrowmax - Body Post Trimmer

Snap the body washers onto the pins.

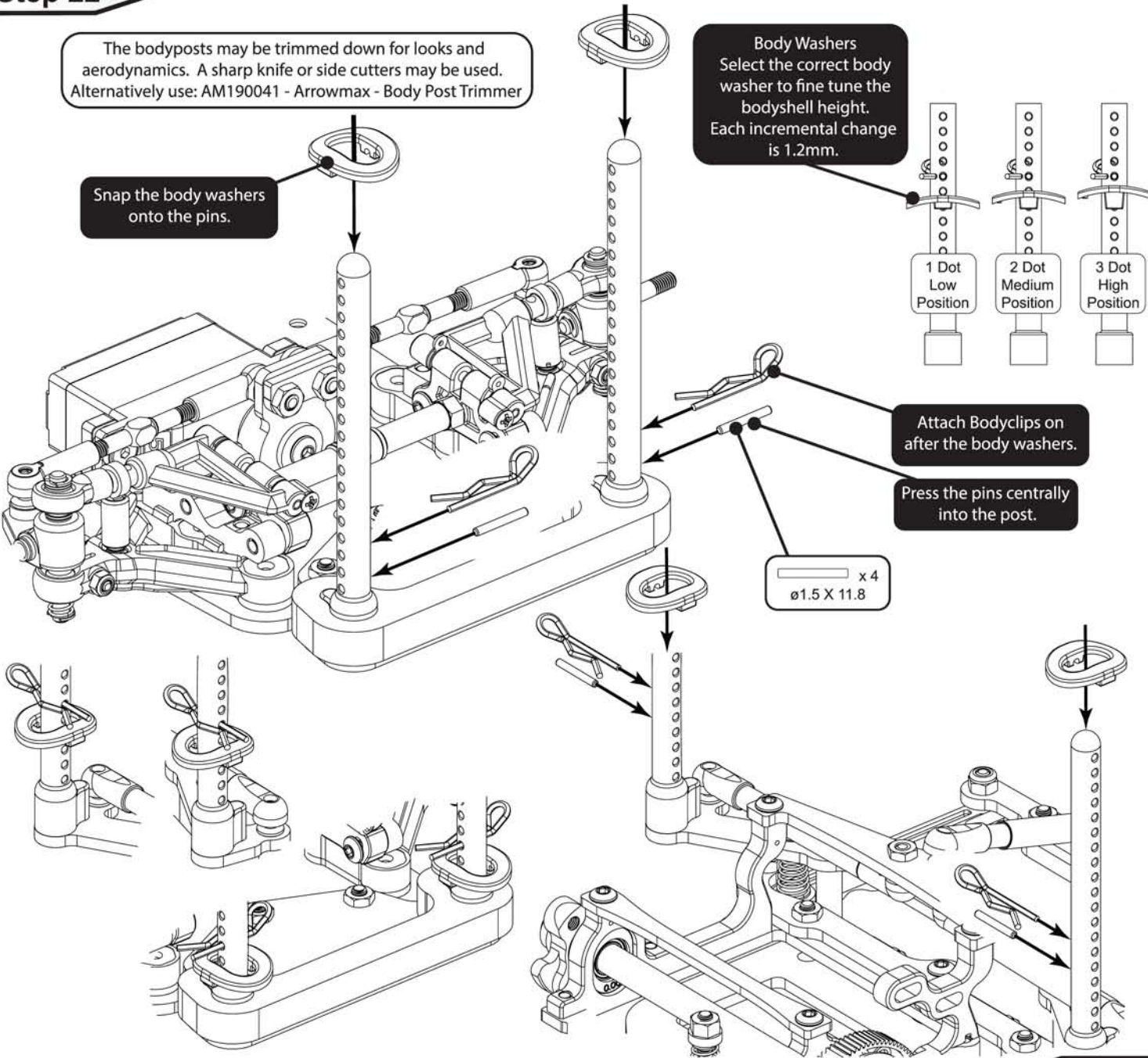
Body Washers
Select the correct body washer to fine tune the bodyshell height. Each incremental change is 1.2mm.

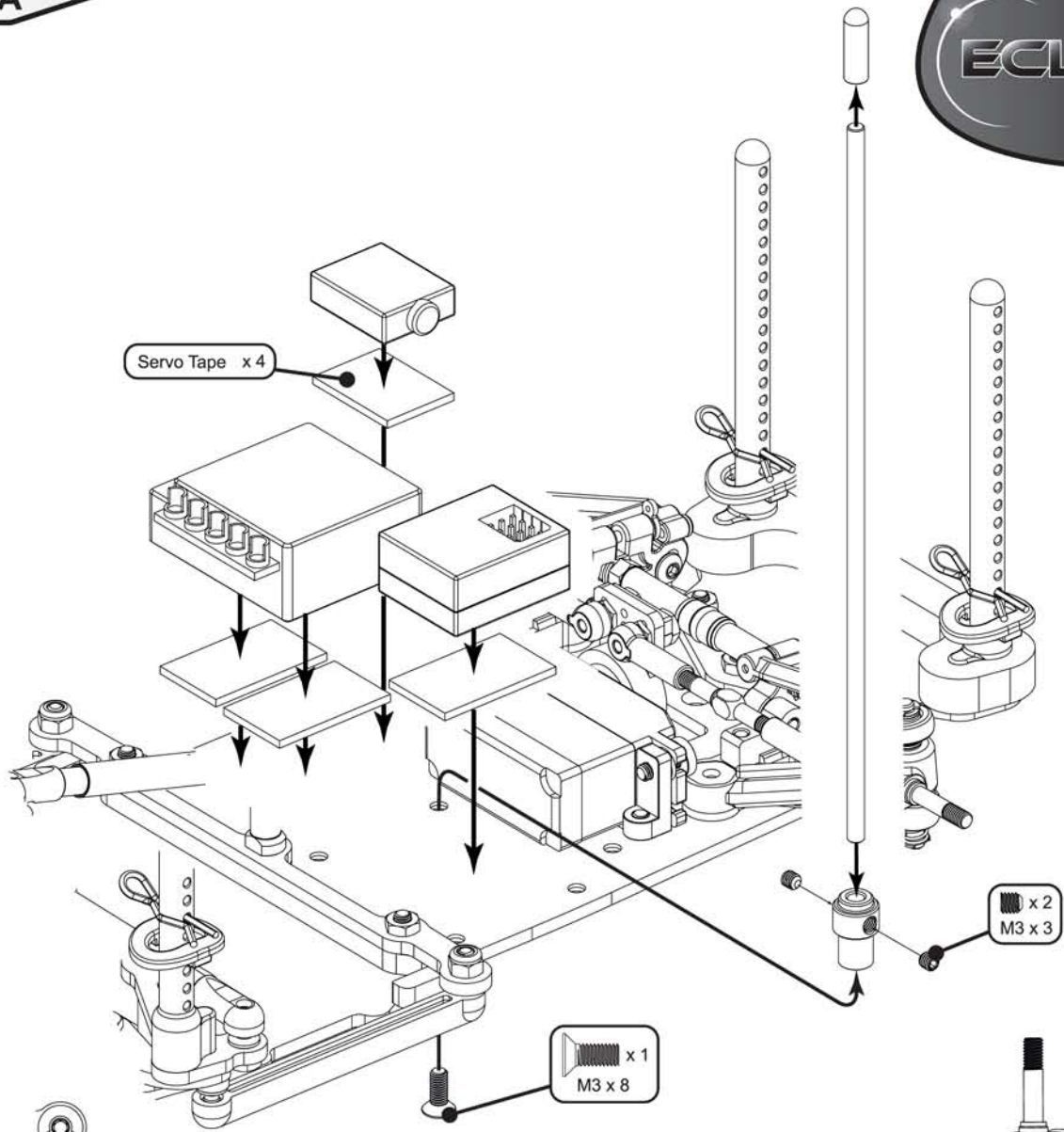


Attach Bodyclips on after the body washers.

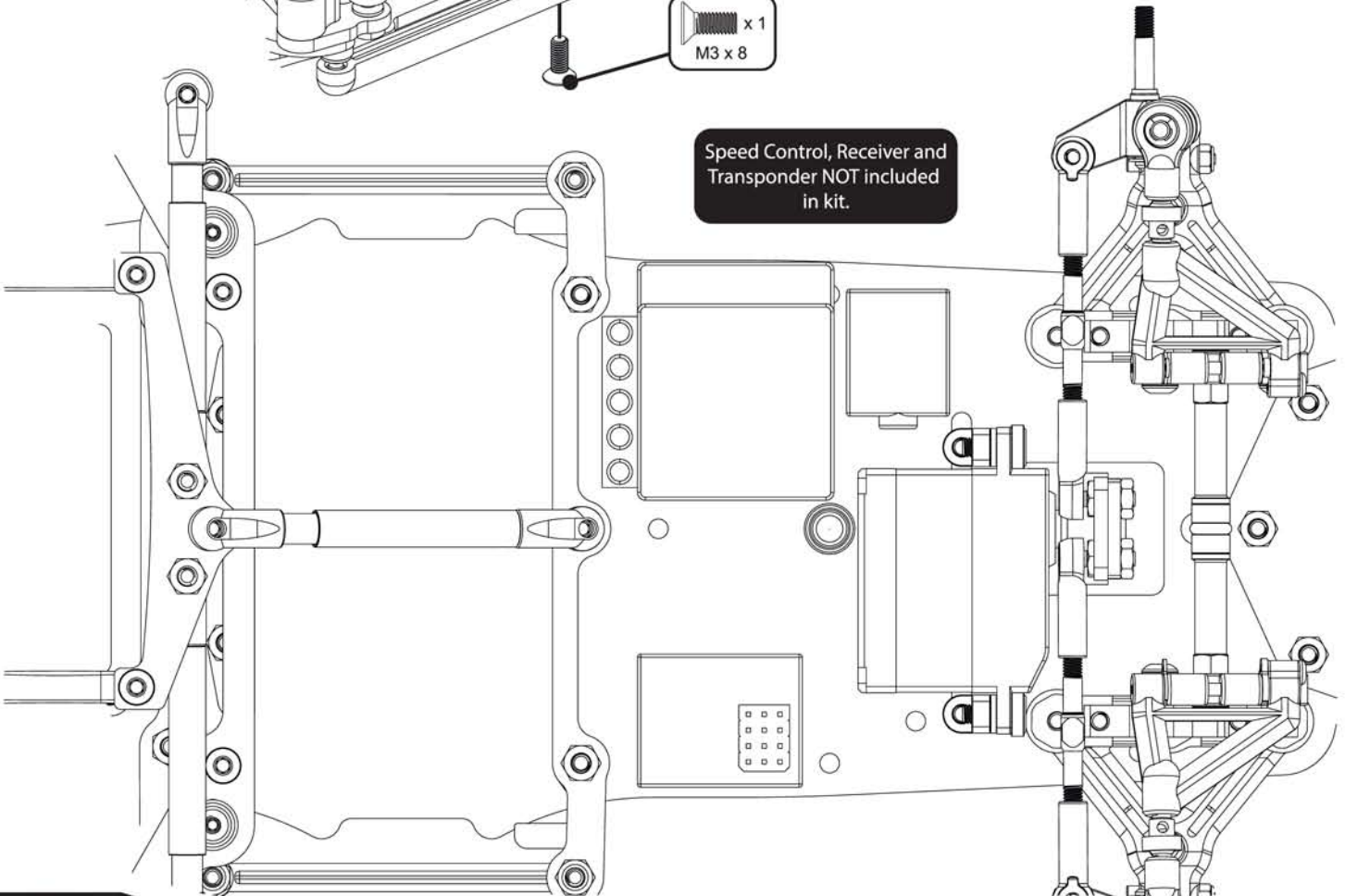
Press the pins centrally into the post.

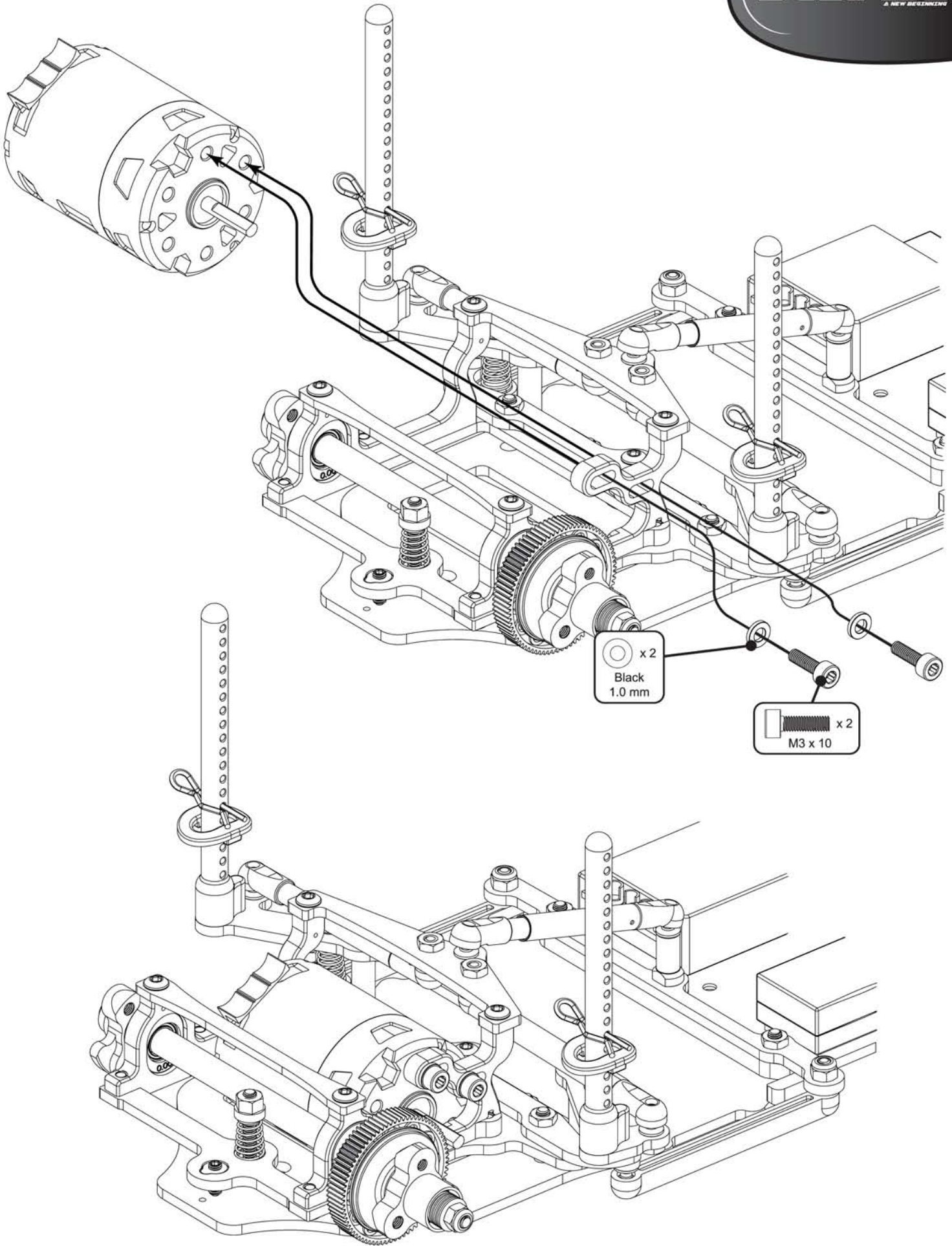
x 4
ø1.5 X 11.8

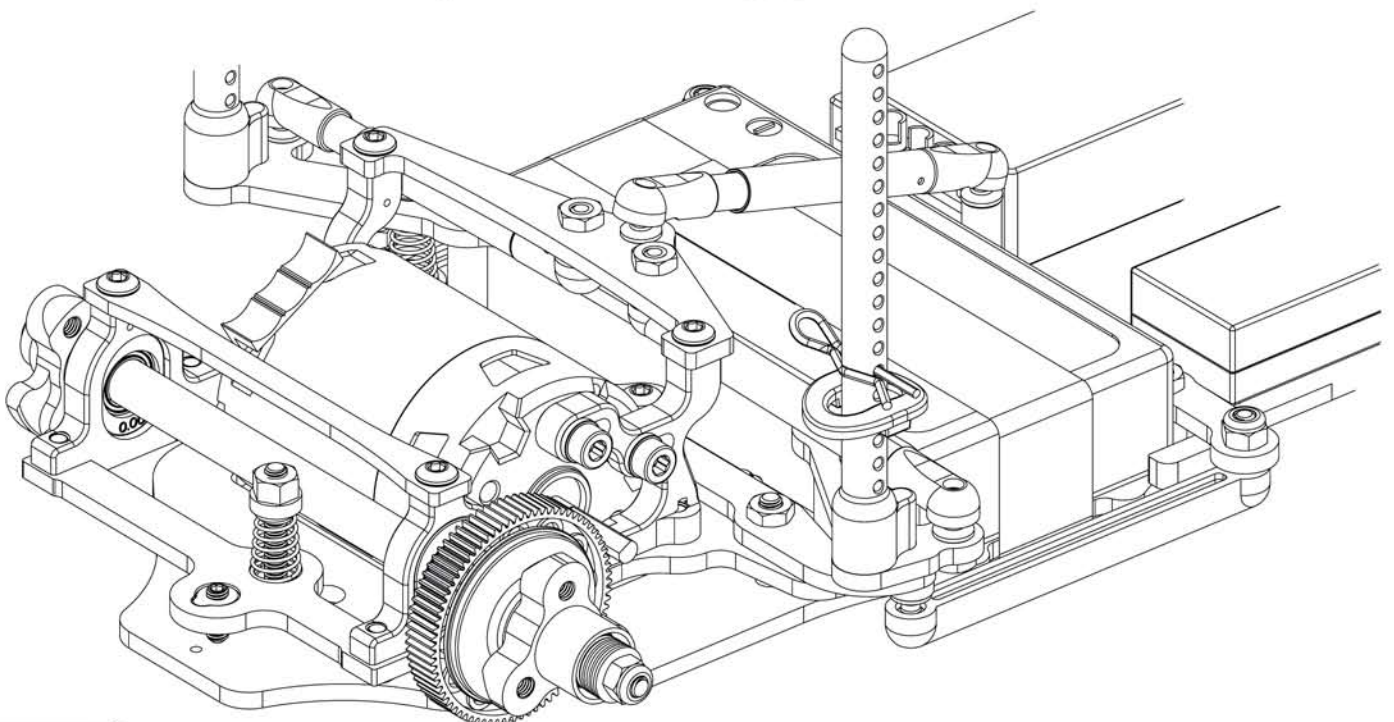
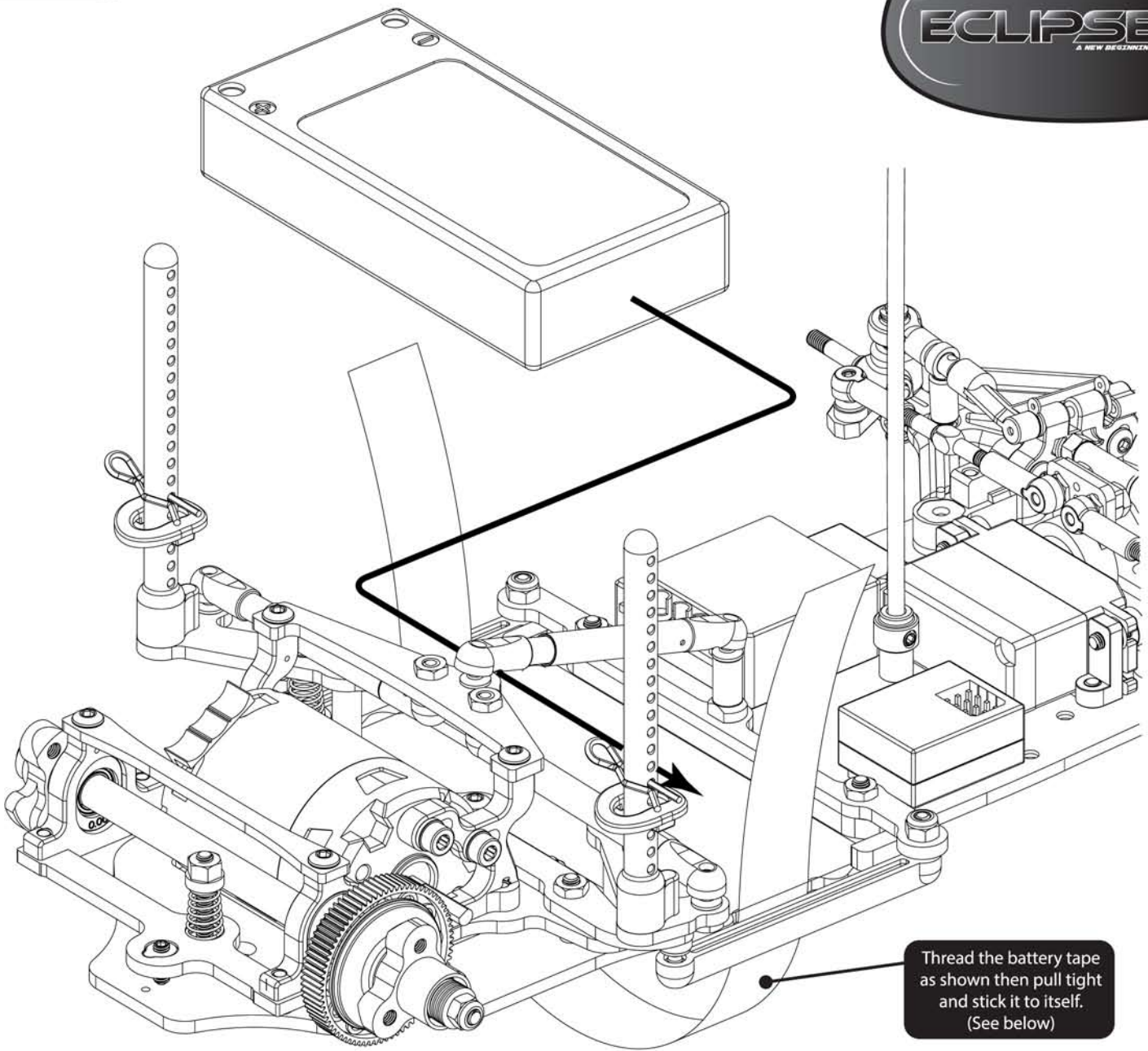


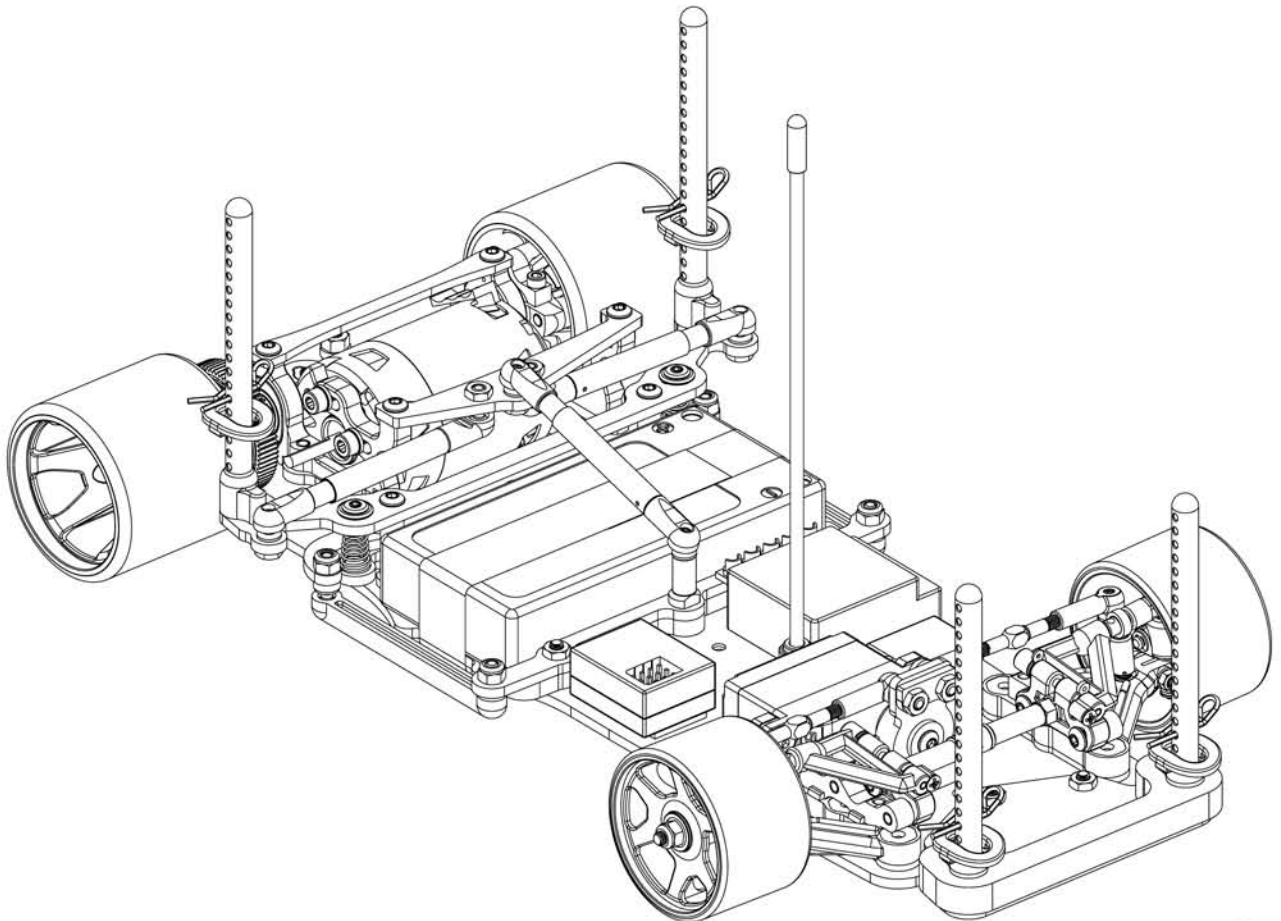
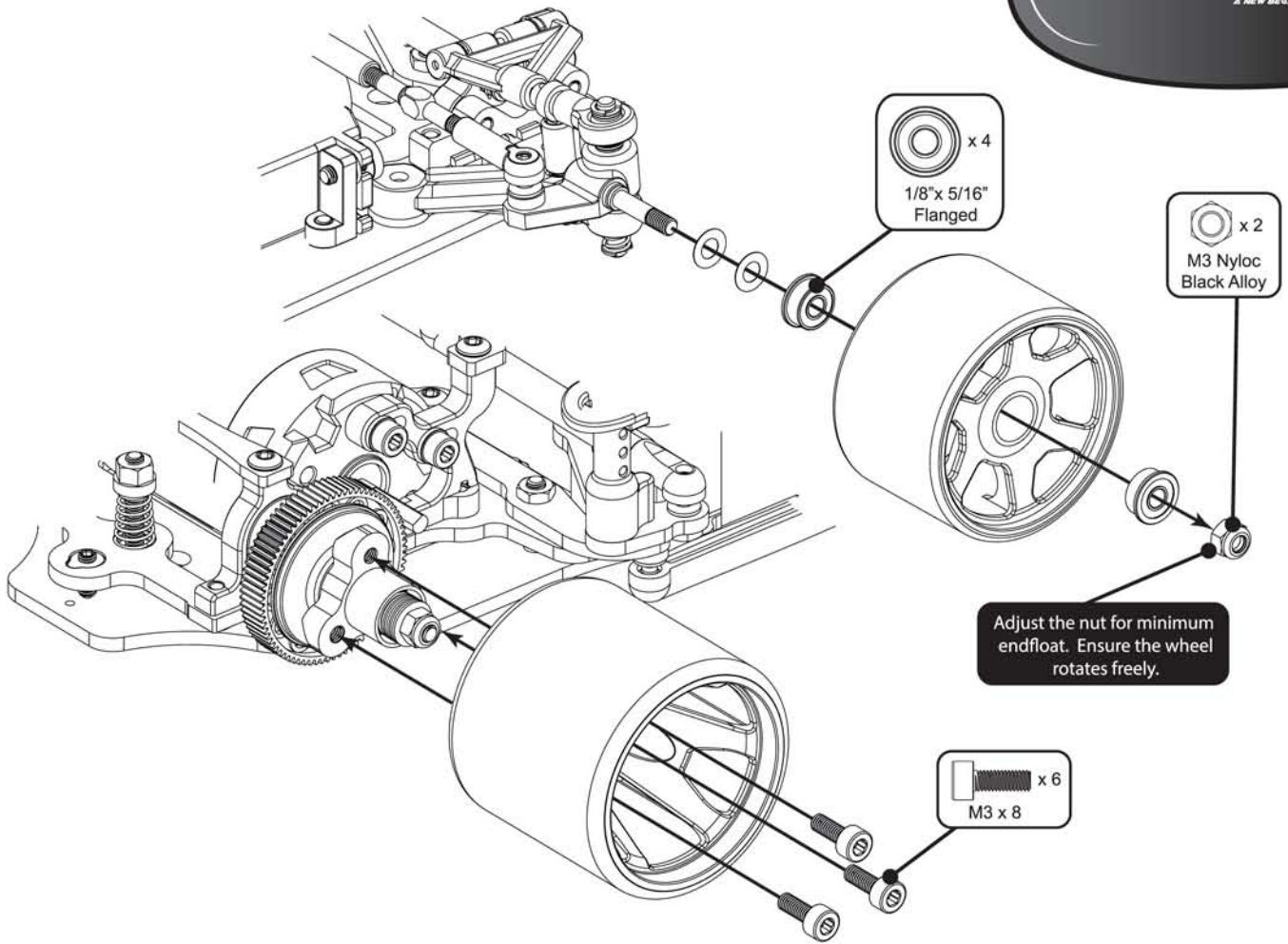


Speed Control, Receiver and Transponder NOT included in kit.







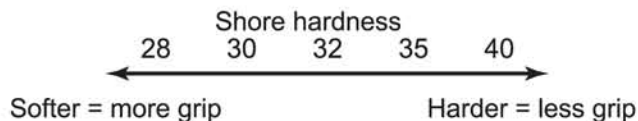




We recommend you start by building your Eclipse to the specification shown in this instruction manual. Then there are many adjustments you can make to tune your car to your track and driving style.

Tyres

The most important factor is to get the tyres right. Contact foam tyres are designed for use on carpet tracks.



Use softer front tyres if you want more steering, and harder front tyres if you want less steering. In high traction conditions sometimes you can have too much overall grip.

Using harder tyres all round should make you faster through the corners with less traction rolling in these conditions.

If the track grip is not high enough, or the tyres are too hard, the car may slide and stop in the corners, if this is the case, reduce the shore rating until the track condition changes.

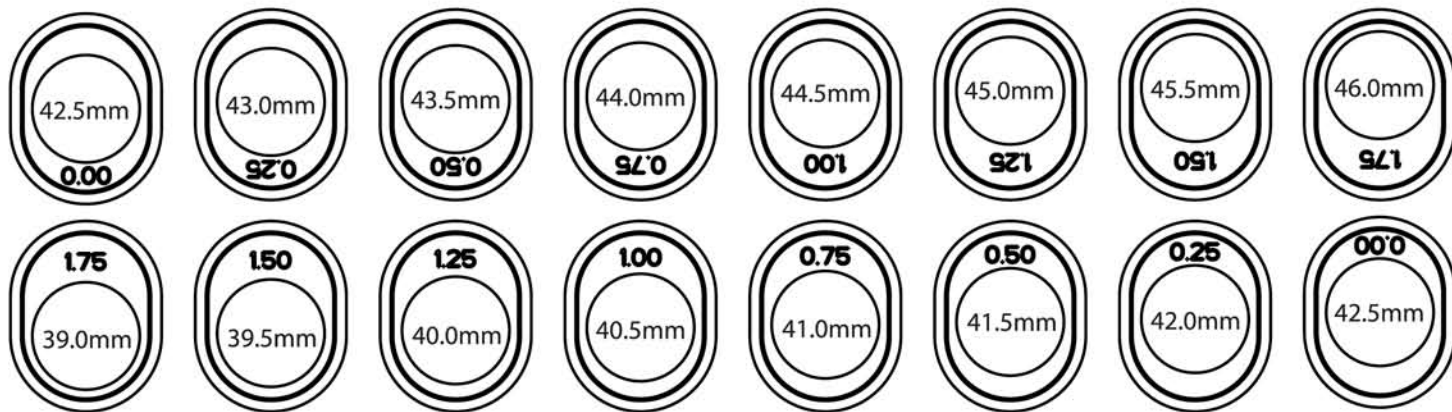
RACERS TIPS

- 43mm Rear, 41.5mm Front is a good all around tyre size, reducing this size is only an advantage in extreme conditions to prevent grip roll.

- If you have too much steering then add a thin layer of superglue (**CR522 or MR-Superglue**) to the outside edge of the front tyre to reduce the front tyre grip. This can be used to prevent grip roll in extreme conditions.

Rear Ride Height

Using these Eccentrics for the foam diameter stated will give the kit rear ride height setting of approximately 3.5mm.



Gear Ratio's

First work out the gear ratio from the spur gear and pinion (For example $76/40 = 1.9$).

Then complete the following equation.

$$\frac{43 \text{ (tyre dia)} \times \pi \text{ (3.142)}}{1.9 \text{ (gear ratio)}} = 71.1\text{mm/rev}$$

In this chart we have given the mm/rev figures for our suggested tyre size 43mm, for a range of spurs and pinions.

64DP GEARS

| | 19T | 20T | 21T | 22T | 23T | 24T | 25T | 26T | 27T | 28T | 29T | 30T | 31T | 32T | 33T | 34T | 35T | 36T | 37T | 38T | 39T | 40T | 41T | 42T | 43T | 44T | 45T | 46T | 47T | 48T | 49T | 50T | 51T | 52T | 53T | 54T | | | |
|-----|-------|------|-------|-------|-------|-------|-------|-------|-------|-------|-------|-------|-------|-------|-------|-------|-------|-------|-------|-------|-------|-------|-------|-------|-------|-------|-------|-------|-------|-------|-------|-------|-------|-------|-------|--------|--|--|--|
| 72T | | | | | | | | | | | | | | | | | 65.67 | 67.54 | 69.42 | 71.3 | 73.17 | 75.05 | 76.93 | 78.8 | 80.68 | 82.55 | 84.43 | 86.31 | 88.18 | 90.06 | 91.94 | 93.81 | 95.69 | 97.56 | 99.44 | 101.32 | | | |
| 76T | | | | | | | | | | | | | 55.1 | 56.88 | 58.66 | 60.43 | 62.21 | 63.99 | 65.77 | 67.54 | 69.32 | 71.1 | 72.88 | 74.65 | 76.43 | 78.21 | 79.99 | 81.76 | 83.54 | 85.32 | 87.1 | 88.87 | | | | | | | |
| 78T | | | | | | | | | | | 50.23 | 51.96 | 53.69 | 55.42 | 57.15 | 58.88 | 60.62 | 62.35 | 64.08 | 65.81 | 67.54 | 69.28 | 71.01 | 72.74 | 74.47 | 76.2 | 77.94 | 79.67 | 81.4 | 83.13 | | | | | | | | | |
| 88T | 29.17 | 30.7 | 32.24 | 33.77 | 35.31 | 36.84 | 38.38 | 39.91 | 41.45 | 42.98 | 44.52 | 46.05 | 47.59 | 49.12 | 50.66 | 52.19 | 53.73 | 55.26 | 56.8 | 58.33 | | | | | | | | | | | | | | | | | | | |

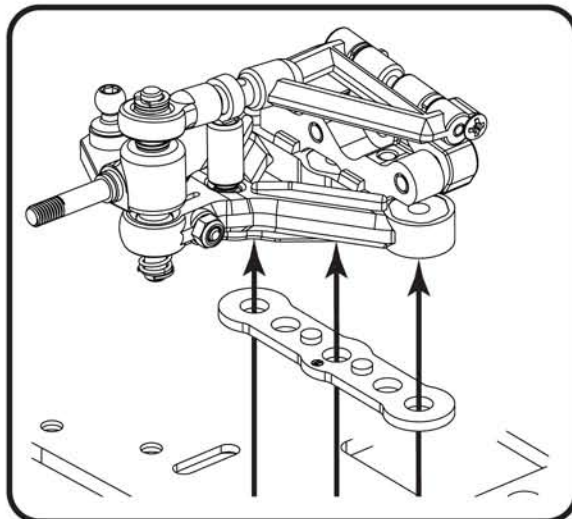
Minimum Combined Tooth Sum 107T - Maximum Combined Tooth Sum 126T

Front Ride Height

Using ride height spacers under the front end gives simple ride height adjustment. (Mouldings bag B)

Adding spacers decreases front ride height, removing them increases ride height.

Included are 1mm, 1,5mm and 2mm ride height spacers. Kit setting is the 2mm spacers (for use with 41.5mm tyres) A good ride height figure for most track conditions is 3.5mm.



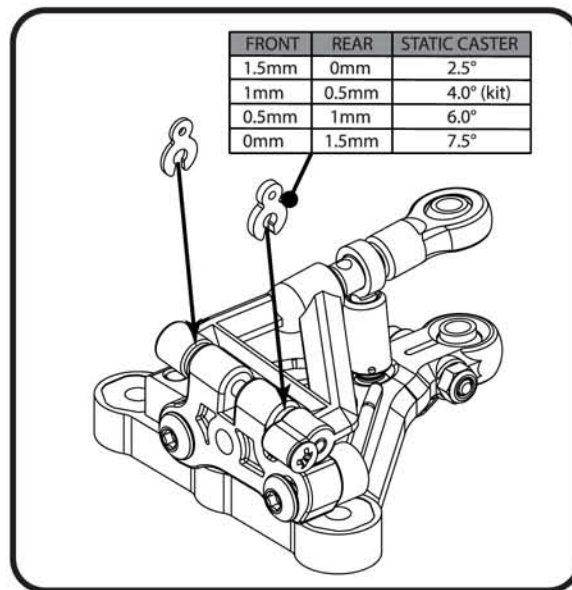
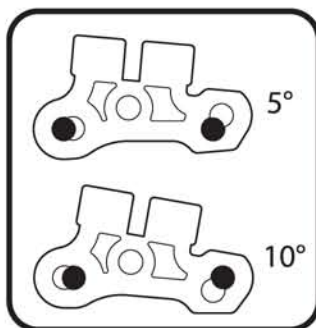
Caster

Static Caster

Using the clips supplied allows adjustment of static caster.
 -More static caster can be used to give more straight line stability. This can be a good option when the car feels too responsive.
 -Less static caster gives more initial steering and response and may be a good solution if the car feels too 'lazy'.

Reactive Caster

Adjusting the position of these screws alters how much the caster changes when the suspension is compressed. 5° has less reduction in caster and 10° has more reduction in caster when the front suspension compresses. Kit setting is 5°. 10° will give more response and steering and 5° gives a smoother, easier feeling.



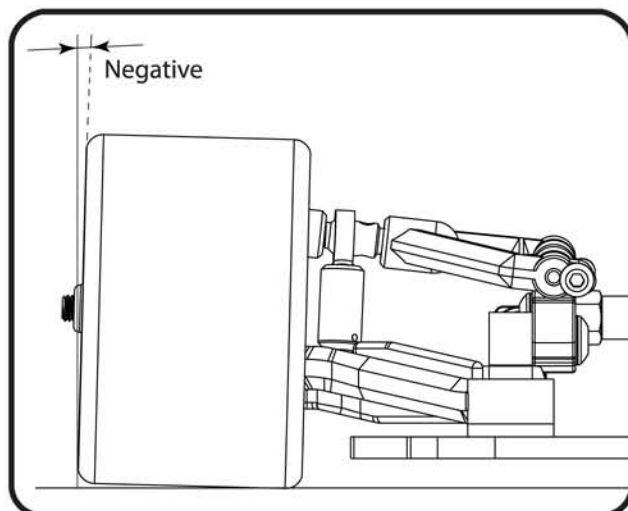
Camber

Increasing the negative camber angle will increase the cars steering. This will make the car more difficult to drive but often faster on a lap.

Reducing the negative camber angle is a good setting change if traction roll is a problem.

As a general rule, setting the camber so that the tyres wear without any coning will give the most ideal setting in usual conditions.

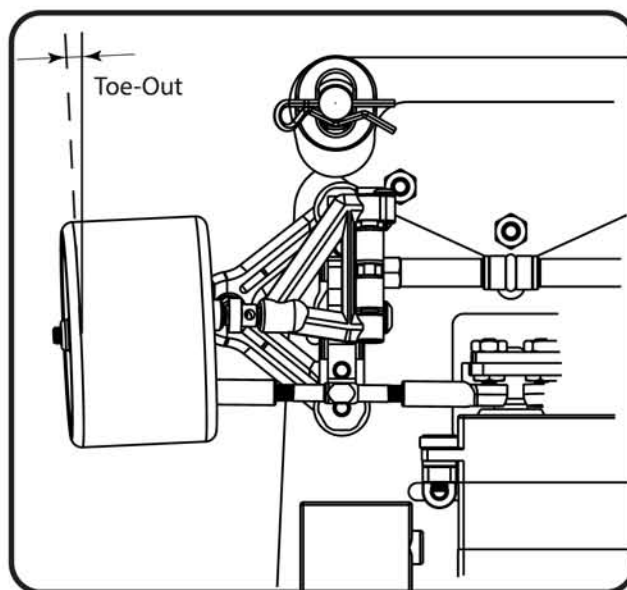
Between -0.5degrees and -1.0degrees is a good setting range.



Front Toe

Parallel front wheels or a slight Toe-out (up to 1 degree) is our suggested setting range.

Toe-out gives more initial steering. It does however make the car more difficult to drive on the straight, due to the increased responsiveness.

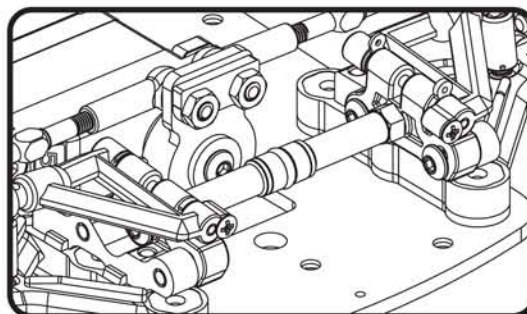


Front End Brace

This Front End Brace provides stiffness to the front end of the car.

In general, the more flexibility in the front end, the more front end grip will be generated. More steering is provided and a more difficult to drive car than with a less flexible front end.

The brace as standard should be fitted with an o ring. This gives a slight flexibility. If more stiffness is wanted, the o ring may be replaced with a 2mm washer.



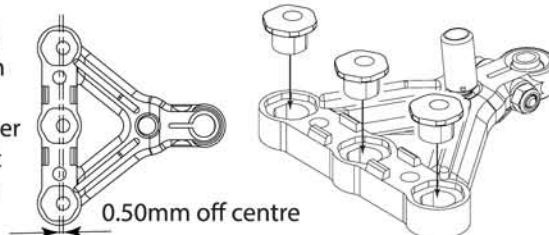
Track Width

Front

- Wider front track width will make the car easier to drive, provide less steering and give a slower response.
- Narrower front track width will make the car harder to drive, provide more steering and give a faster response.

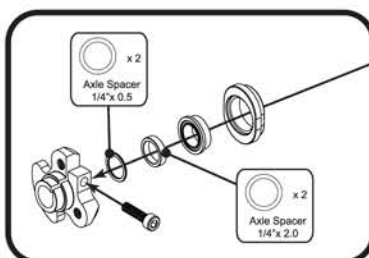
SPEED SECRET

(U7026 arm insert 0.5 Offset)
Narrow the track width 0.5mm per side in this orientation.
Widen the track width 0.5mm per side by spinning the 0.5 offset inserts 180° from the diagram shown.



Rear

- Wider rear track width provides increased rear grip and an easier to drive car.
- Narrower rear track width increases corner speed, steering and is harder to drive.

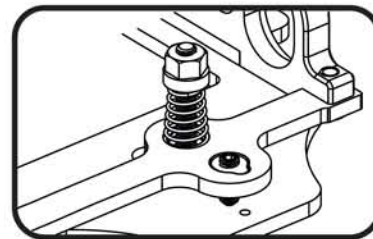


Kit rear width has a 2mm and a 0.5mm spacer on either side. Adjust this spacing to suite. (Keep equal on both sides!)

Rear Centre Spring

This spring is used to set the pod angle.
Adjust the spring tension so that the pod is horizontal when the car is on a flat surface. This gives the kit setting with zero anti-squat or pro-squat.

- A harder rear spring can give more initial steering.
- A softer rear spring will give more aggressive mid corner steering and improve the cars bump handling ability.



Anti-Squat

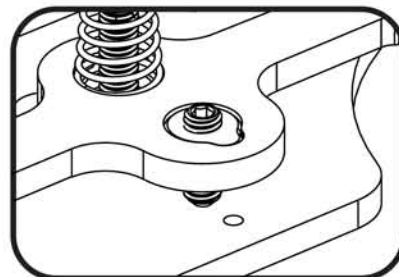
If the rear centre spring is screwed down further, the pod will no longer be horizontal. Angled down at the rear is Anti-squat. If the spring is unscrewed from horizontal, the pod will be angled forwards. This is Pro-squat.

Anti-squat resists the weight transfer to the rear under power. This will increase on power steering. Typically anti-squat may be used but pro-squat is rarely useful.

Rear Droop

Rear droop adjusts the balance of the cars handling.
Less droop makes the car more aggressive, squaring up the turns.
More droop gives less corner rotation but an easier to drive car.
More droop also improves the cars bump handling.

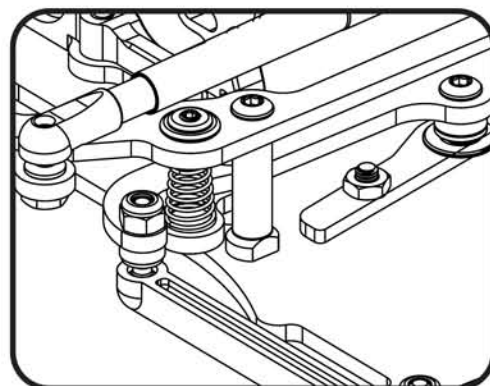
Start with 1mm of droop.
To set this start with the droop screw backed out and screw in to reduce droop.
Measure this by measuring the cars rear ride height, then take all the weight off the car by lifting from the rear of the top damper tube. (The wheels must still just be touching the floor)
Measure the chassis from the floor in this position and subtract the ride height to calculate the droop.



Roll Springs

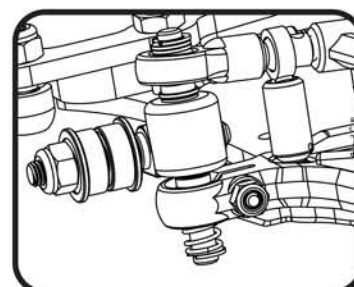
Roll springs are used to control the cars steering balance.
A softer spring will give an easier to drive car.
Stiffer roll springs can be used to give a more aggressive steering car.
The standard setting has the roll springs not compressed and both just touching the lower pod plate when the car is stationary.
Screwing these downward and compressing the springs creates more steering while loosening them gives an easier to drive car.

Adjusting these screws allow tweak settings to be finely adjusted.
Ensure they are not too unevenly set. If more than 0.5mm different further investigation is required.



Front Springs

Softer springs will ride the bumps better and generally allow the car to roll more which increases traction.
Harder springs make the car more responsive and are more suitable for high grip tracks.

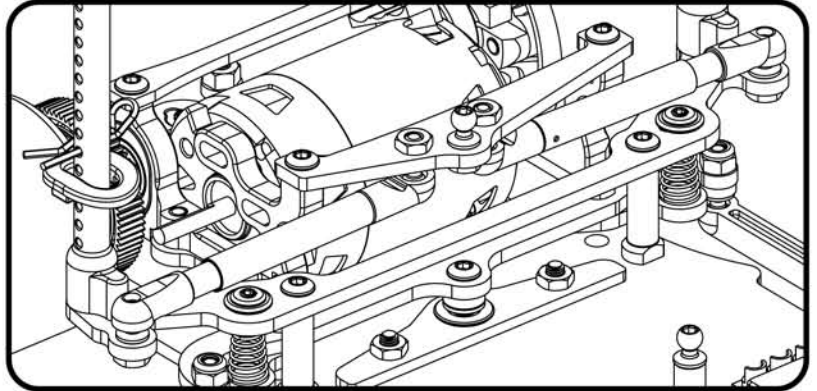


Rear Roll Damping

Generally in high traction track conditions, thinner roll damping oil is better. Low traction tracks may require thicker damping.

Thicker roll damping oil slows the weight transfer of the rear and makes the car easier to drive. Thicker oil can help if the track surface is bumpy and there are issues with bumps in the middle of the corner.

A good range is between 7000cst and 20,000cst.

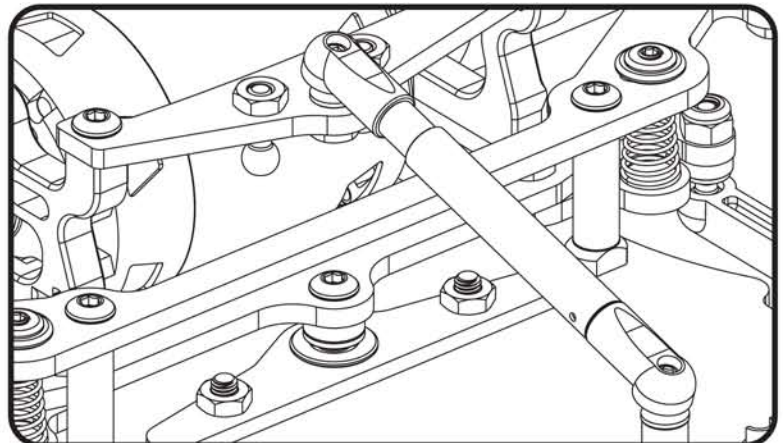


Rear Bump Damping

Generally in high traction track conditions, thinner bump damping oil is better. Low traction tracks may require thicker damping.

Thicker bump damping oil slows the weight transfer of the rear and makes the car easier to drive when coming off power. Thicker oil can help if the track surface is bumpy and there are issues with bumps when the car is moving in a straight line.

A good range is between 15,000cst -30,000cst.



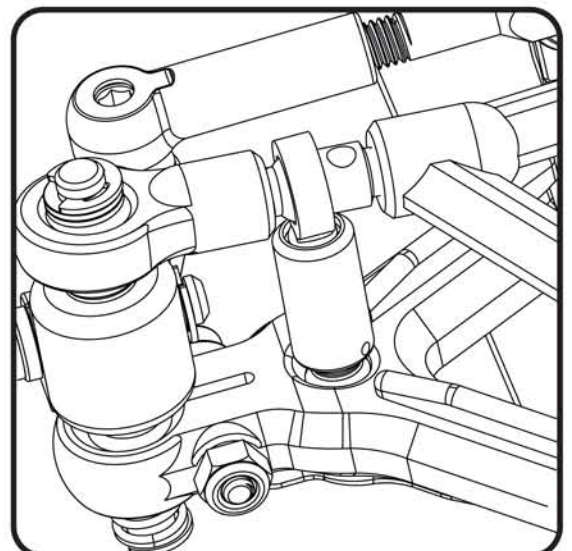
Front Damping

Front damping can be used to tune the car depending on the track traction levels also.

Like rear damping, in high traction track conditions, thinner oil is required, compared to low traction track conditions, where thicker oil can improve the cars drivability.

Thicker oil here generally always gives a less responsive, easier to drive car. Too thick oil here may lead to a 'lazy' feeling car which lacks corner speed.

We suggest a wide range of possibilities here starting from 3,000cst - 100,000cst.





U4834 - M3x8 Alloy Cap Hd Screws - (pk6)



U3582 - Precision Balance Pivot Set



U1954 - Pro - Thrust Bearing



U1572 - Titanium Turnbuckle; purple - 39mm (pr)
CR474 - Ti Turnbuckle 3mm x 38mm (pr)



U4812 - Ceramic Bearing 1/8x5/16x9/64 Flanged (pr)



Titanium and Alloy Screws

- CR310 - Alloy Csk Hex Screws M3 x 6 (pk10)
- CR311 - Alloy Csk Hex Screws M3 x 8 (pk10)
- CR312 - Alloy Csk Hex Screws M3 x 10 (pk10)
- CR314 - Alloy Button Head Hex Screws M3 x 6 (pk10)
- CR315 - Alloy Button Head Hex Screws M3 x 8 (pk10)
- CR316 - Alloy Button Head Hex Screws M3 x 10 (pk10)
- CR327 - Titanium Button Head Hex Screws M3 x 6 (pk10)
- CR328 - Titanium Button Head Hex Screws M3 x 8 (pk10)
- CR329 - Titanium Button Head Hex Screws M3 x 10 (pk10)
- CR320 - Titanium Csk Hex Screws M3 x 6 (pk10)
- CR321 - Titanium Csk Hex Screws M3 x 8 (pk10)
- CR322 - Titanium Csk Hex Screws M3 x 10 (pk10)



CR513 - Kimbrough - Spur Gear 78T - 64DP
CR514 - Kimbrough - Spur Gear 88T - 64DP
CRW64072 - Core RC - Diff Spur 64DP 72T



U7007 - Aluminium Ball Stud Short-Eclipse - (pk5)



U4314 - SPEED PACK - Alloy Black M3 Washers - (18pc)



U4979 - Ceramic Bearing 1/4 x 3/8 x 1/8 Flanged - (pr)



U7026 - 0.5 Offset lower Arm Insert - Eclipse - (pk6)



U7020 - Kingpin Ti Coated + E-Clips - Eclipse - (pr)



U4811 1/8 Silicon Nitride Ball - (pk12)



3 Layer Soft Shell Team Jacket - Black
 G339XS Extra Small - 34 inch chest
 G339S Small - 38 inch chest
 G339M Medium - 41 inch chest
 G339L Large - 44 inch chest
 G339XL X Large - 46 inch chest
 G339XXL XX Large - 48 inch chest
 G339XXXL XXX Large - 50 inch chest



Team Hooded Sweatshirt - Navy Blue
 G343S Small
 G343M Medium
 G343L Large
 G343XL Extra Large



Team Caps - Black
 G340 Schumacher Baseball Cap



Team Polo Shirt - Navy blue
 G344S Small
 G344M Medium
 G344L Large
 G344XL X Large
 G344XXL XX Large
 G344XXXL XXX Large
 G344XXXXL XXXX Large
 G344XXXXXL XXXXX Large



Team T-Shirt - Navy blue
 G342S Small
 G342M Medium
 G342L Large
 G342XL X Large
 G342XXL XX Large
 G342XXXL XXX Large
 G342XXXXL XXXX Large
 G342XXXXXL XXXXX Large



Team Beanie
 G338 - 2 Tone Beanie Knitted Hat



Team Towel
 G315 - Schumacher Pit Towel



Team Pit Mat
 G310 - Schumacher Rubber Pit Mat
 750mm x 500mm



Team Banner
 S500B - Team Schumacher Banner 3ft x 6ft